

- ▶ **RECOVERED PAPERS STOCKS**
- ▶ **RCCM STOCKS**
- ▶ **RCCM PRODUCTION**
- ▶ **RCCM DELIVERIES (deducted)**

The statistics issued by Containerboard Europe are proprietary to the Association. They are sent to member associations or individual members in accordance with the rules laid down in the internal regulations and must not be distributed outside the members in question unless explicitly approved by the CCB Advisory Board



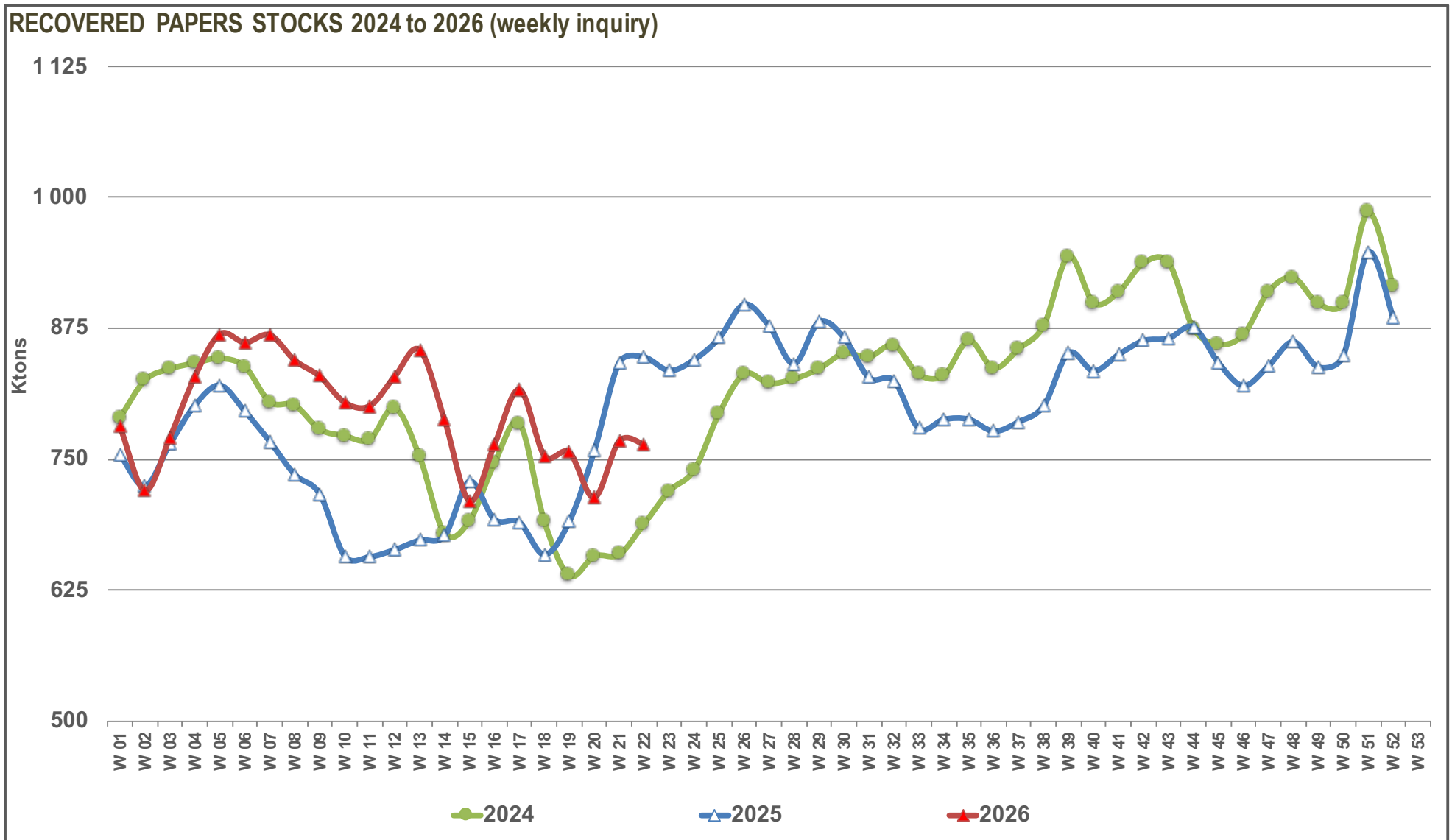
in tons & %	2026												
	10	11	12	13	14	15	16	17	18	19	20	21	22
RP STOCKS* (92,6%)	804 322	800 873	829 067	854 422	787 618	710 331	764 075	816 592	753 527	756 680	713 485	767 579	763 887
Days of production	10,7	10,6	11,0	11,3	10,5	9,4	10,2	11,0	10,1	10,3	9,5	10,3	10,2
Δ STOCKS / Previous Week	tons -24 913	-3 449	+28 194	+25 355	-66 804	-77 287	+53 744	+52 517	-63 065	+3 153	-43 195	+54 094	-3 692
	% -3,0%	-0,4%	+3,5%	+3,1%	-7,8%	-9,8%	+7,6%	+6,9%	-7,7%	+0,4%	-5,7%	+7,6%	-0,5%
<i>Same Week Previous Year</i>	<i>tons 657 747</i>	<i>656 961</i>	<i>663 743</i>	<i>672 770</i>	<i>677 006</i>	<i>728 964</i>	<i>692 646</i>	<i>689 730</i>	<i>659 023</i>	<i>690 775</i>	<i>758 112</i>	<i>842 270</i>	<i>847 462</i>
	<i>% +22,3%</i>	<i>+21,9%</i>	<i>+24,9%</i>	<i>+27,0%</i>	<i>+16,3%</i>	<i>-2,6%</i>	<i>+10,3%</i>	<i>+18,4%</i>	<i>+14,3%</i>	<i>+9,5%</i>	<i>-5,9%</i>	<i>-8,9%</i>	<i>-9,9%</i>
of which													
FRANCE (95,4%)	100 499	98 079	96 915	107 466	108 527	92 990	105 205	117 452	117 947	101 103	84 598	95 655	109 702
Days of production	9,8	9,5	9,4	10,4	10,5	9,1	10,2	11,4	11,5	10,1	8,6	9,7	11,1
Stocks Same Week Previous Year	82 813	79 050	78 503	74 169	71 600	82 331	80 150	79 938	76 691	70 935	80 576	94 722	96 522
GERMANY (99,8%)	274 059	275 789	296 011	306 482	279 054	238 487	264 548	294 913	266 113	277 261	248 351	271 977	251 804
Days of production	9,4	9,5	10,2	10,5	9,6	8,2	9,1	10,4	9,5	9,9	8,8	9,6	9,0
Stocks Same Week Previous Year	240 073	243 535	244 399	252 838	279 947	297 650	262 693	253 301	232 220	246 163	280 085	311 195	300 948
SPAIN , PORTUGAL (95,4%)	113 385	113 440	110 253	108 086	84 596	78 678	87 589	87 672	81 462	90 410	98 345	103 998	108 787
Days of production	10,5	10,5	10,2	10,0	7,8	7,3	8,2	8,2	7,7	8,5	9,4	9,9	10,4
Stocks Same Week Previous Year	86 220	85 524	77 610	85 586	83 926	93 946	78 478	74 259	73 551	94 999	100 334	111 157	117 922
NL, BE, UK (84,6%)	39 835	39 956	53 884	53 088	49 747	44 145	44 579	45 986	38 463	43 226	42 472	49 962	49 313
Days of production	5,6	5,7	7,6	7,5	7,0	6,2	6,2	6,4	5,3	6,0	5,9	6,9	6,8
Stocks Same Week Previous Year	41 906	40 787	47 117	42 278	35 636	40 013	42 597	35 482	37 155	39 326	46 773	49 222	50 323
ITALY , AUSTRIA (94,0%)	170 779	169 372	169 133	171 705	166 531	152 517	156 446	164 229	154 929	147 530	140 233	146 373	148 735
Days of production	14,8	14,7	14,3	14,6	14,2	13,0	12,9	13,5	12,7	12,1	11,2	11,7	11,9
Stocks Same Week Previous Year	130 653	133 191	139 147	142 602	136 710	142 712	161 842	165 050	171 793	165 307	167 942	186 527	195 560
BG, CZ, HR, HU, LT, PL, RO, SK (82,1%)	105 765	104 237	102 871	107 595	99 163	103 514	105 708	106 340	94 613	97 150	99 486	99 614	95 546
Days of production	13,5	13,1	12,9	13,5	12,5	13,0	13,3	13,3	11,7	12,1	12,2	12,3	11,6
Stocks Same Week Previous Year	76 082	74 874	76 967	75 297	69 187	72 312	66 886	81 700	67 613	74 045	82 402	89 447	86 187

* stock level on Monday 6 o'clock a.m.

(%) : representativity of the sample based on the total European 2024 production or on the country (or group of countries) 2024 production.

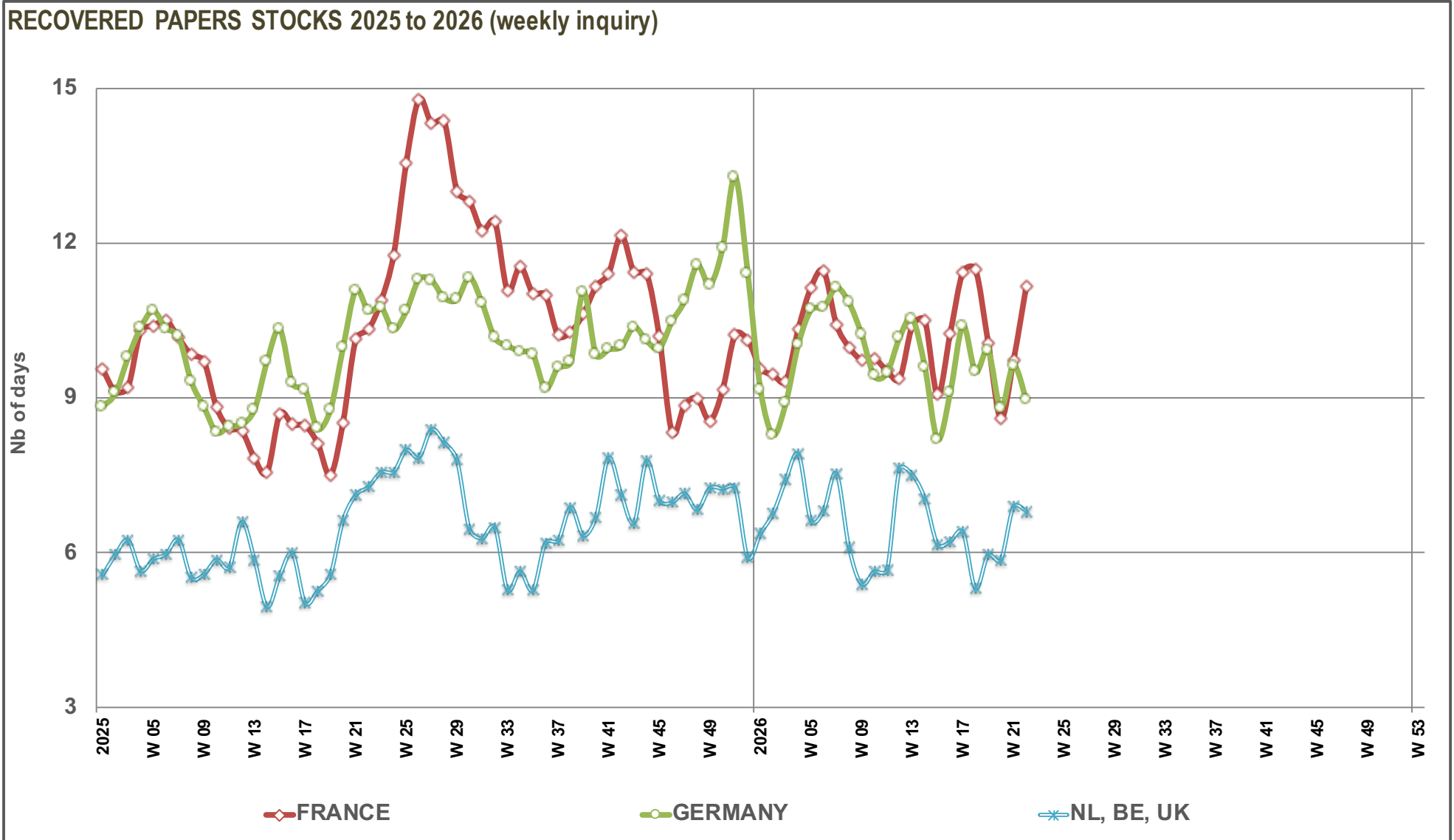
HISTORICAL SAMPLE

• Graph 1 •



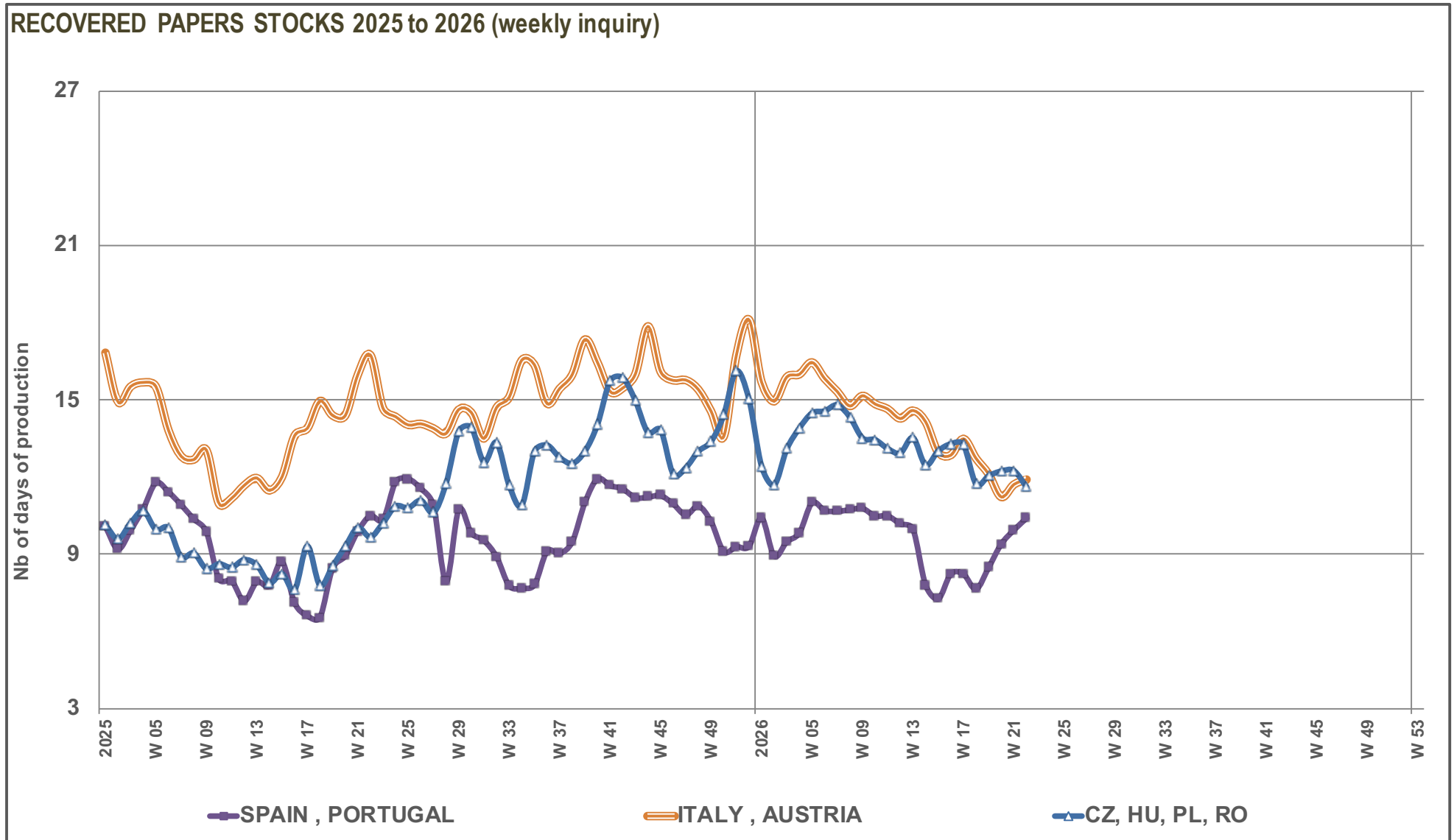
HISTORICAL SAMPLE

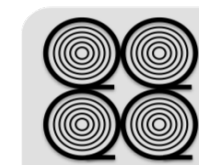
• Graph 2 •



HISTORICAL SAMPLE

• Graph 3 •



HISTORICAL SAMPLE


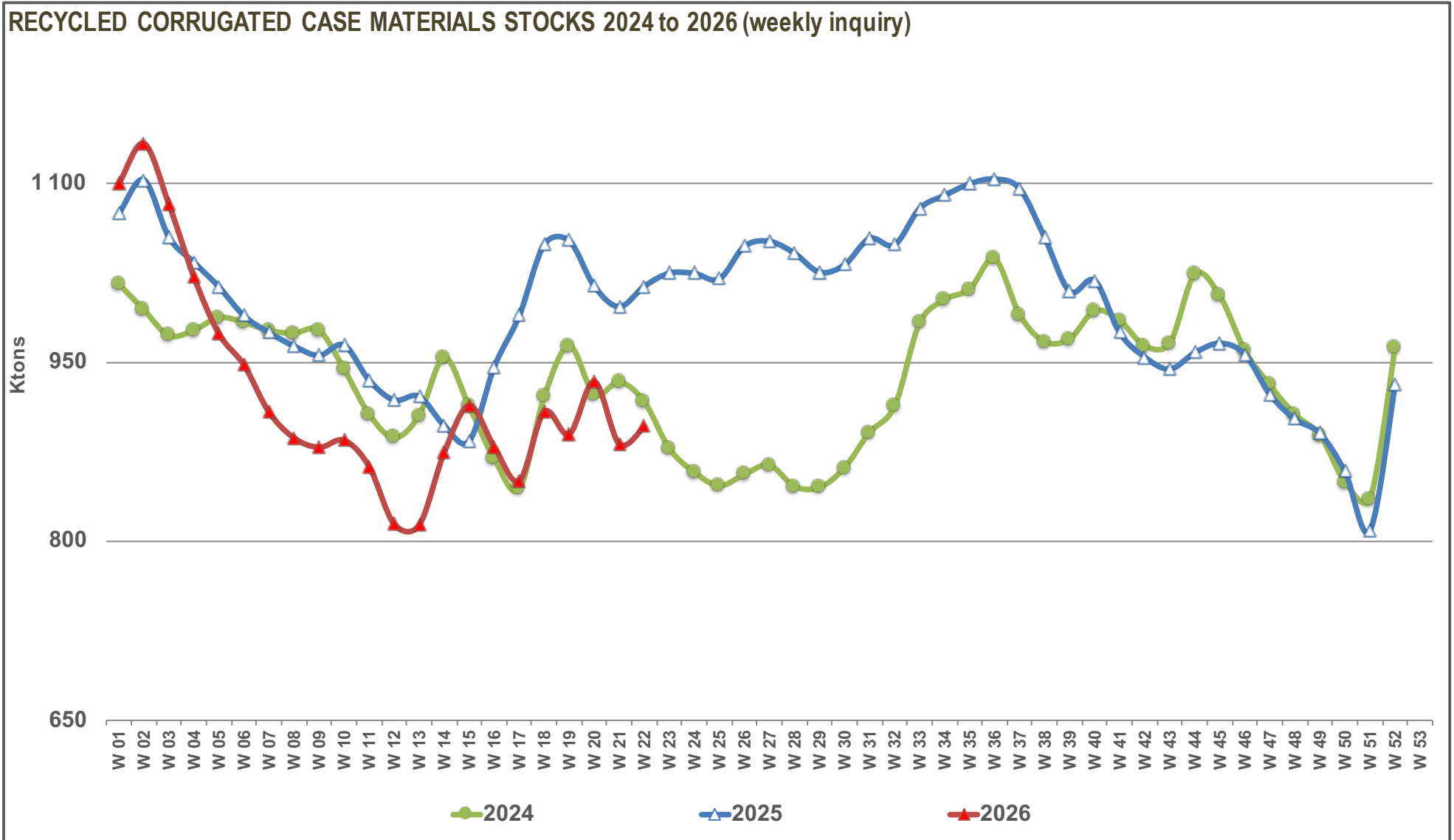
in tons & %	2026												
	10	11	12	13	14	15	16	17	18	19	20	21	22
RCCM STOCKS* (92,6%)	884 577	862 793	814 479	813 510	874 302	913 711	879 250	850 699	908 443	889 766	933 785	881 550	896 298
Days of supply	11,0	10,7	10,3	10,3	11,1	11,7	11,3	10,9	11,7	11,5	12,3	11,4	11,6
Δ STOCKS / Previous Week	tons +5 865	-21 784	-48 314	-969	+60 792	+39 409	-34 461	-28 551	+57 744	-18 677	+44 019	-52 235	+14 748
	% +0,7%	-2,5%	-5,6%	-0,1%	+7,5%	+4,5%	-3,8%	-3,2%	+6,8%	-2,1%	+4,9%	-5,6%	+1,7%
Same Week Previous Year	tons 964 349	935 037	918 321	921 428	897 057	883 982	946 012	988 936	1048 724	1051 802	1013 799	996 574	1013 724
	% -8,3%	-7,7%	-11,3%	-11,7%	-2,5%	+3,4%	-7,1%	-14,0%	-13,4%	-15,4%	-7,9%	-11,5%	-11,6%
of which													
FRANCE (95,4%)	127 012	123 345	125 412	119 127	122 502	129 181	124 533	118 722	129 206	136 260	144 856	130 350	130 428
Days of supply	11,9	11,5	11,7	11,1	11,5	12,1	11,8	11,3	12,3	13,4	14,5	12,3	12,3
Stocks Same Week Previous Year	102 219	103 108	100 979	102 171	102 328	97 331	91 208	105 149	113 055	119 347	114 732	111 030	117 369
GERMANY (99,8%)	327 349	319 423	295 504	299 309	321 572	343 963	328 366	310 702	325 720	309 897	340 643	320 343	332 838
Days of supply	10,5	10,2	9,5	9,8	10,6	11,6	11,1	10,8	11,3	10,6	11,7	10,7	11,1
Stocks Same Week Previous Year	385 497	372 237	371 020	374 634	349 193	342 520	373 149	391 204	420 704	418 368	394 984	383 676	408 303
SPAIN , PORTUGAL (95,4%)	150 837	147 915	134 063	142 662	163 831	160 807	151 454	150 545	156 377	153 592	144 996	135 093	136 535
Days of supply	13,4	13,2	11,1	12,2	14,0	13,7	12,8	12,8	13,3	13,0	13,3	12,4	12,6
Stocks Same Week Previous Year	154 250	146 230	148 323	142 971	140 228	138 287	162 364	166 376	170 773	159 999	161 725	159 508	157 696
NL, BE, UK (84,6%)	86 378	86 652	75 122	75 875	82 009	91 401	88 514	89 061	95 089	93 683	96 786	92 828	91 428
Days of supply	12,3	12,3	10,7	10,8	11,7	13,0	12,6	12,6	13,5	13,2	13,6	12,9	12,7
Stocks Same Week Previous Year	98 837	98 549	89 659	95 190	92 584	95 021	101 761	108 255	111 062	115 058	103 614	102 427	104 524
ITALY , AUSTRIA (94,0%)	104 013	100 763	100 509	96 151	101 989	110 662	110 731	100 220	116 211	112 774	119 696	114 305	116 102
Days of supply	8,6	8,3	8,3	7,9	8,4	9,1	9,1	8,2	9,5	9,3	9,9	9,3	9,4
Stocks Same Week Previous Year	117 725	115 402	111 623	108 757	115 841	117 949	113 161	119 997	120 344	127 070	127 616	125 945	122 550
BG, CZ, HR, HU, LT, PL, RO, SK (82,1%)	88 988	84 695	83 869	80 386	82 399	77 697	75 652	81 449	85 840	83 560	86 808	88 631	88 967
Days of supply	10,3	9,8	9,7	9,3	9,7	9,2	9,1	9,8	10,4	10,5	10,9	11,3	11,0
Stocks Same Week Previous Year	105 821	99 511	96 717	97 705	96 883	92 874	104 369	97 955	112 786	111 960	111 128	113 988	103 282

* stock level on Monday 6 o'clock a.m.

(%) : representativity of the sample based on the total European 2024 production or on the country (or group of countries) 2024 production.

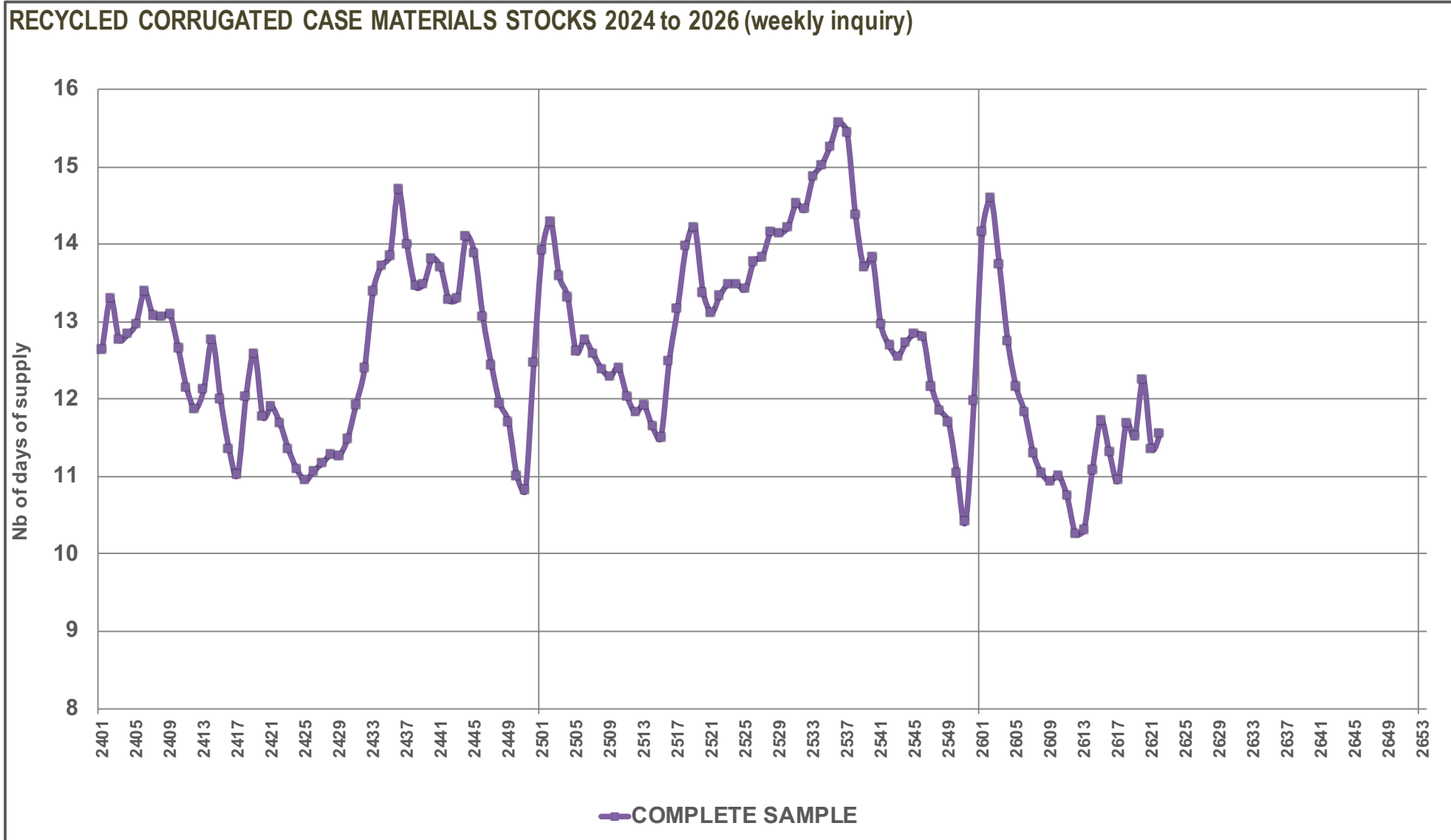
HISTORICAL SAMPLE

• Graph 4 •



HISTORICAL SAMPLE

• Graph 5 •



HISTORICAL SAMPLE

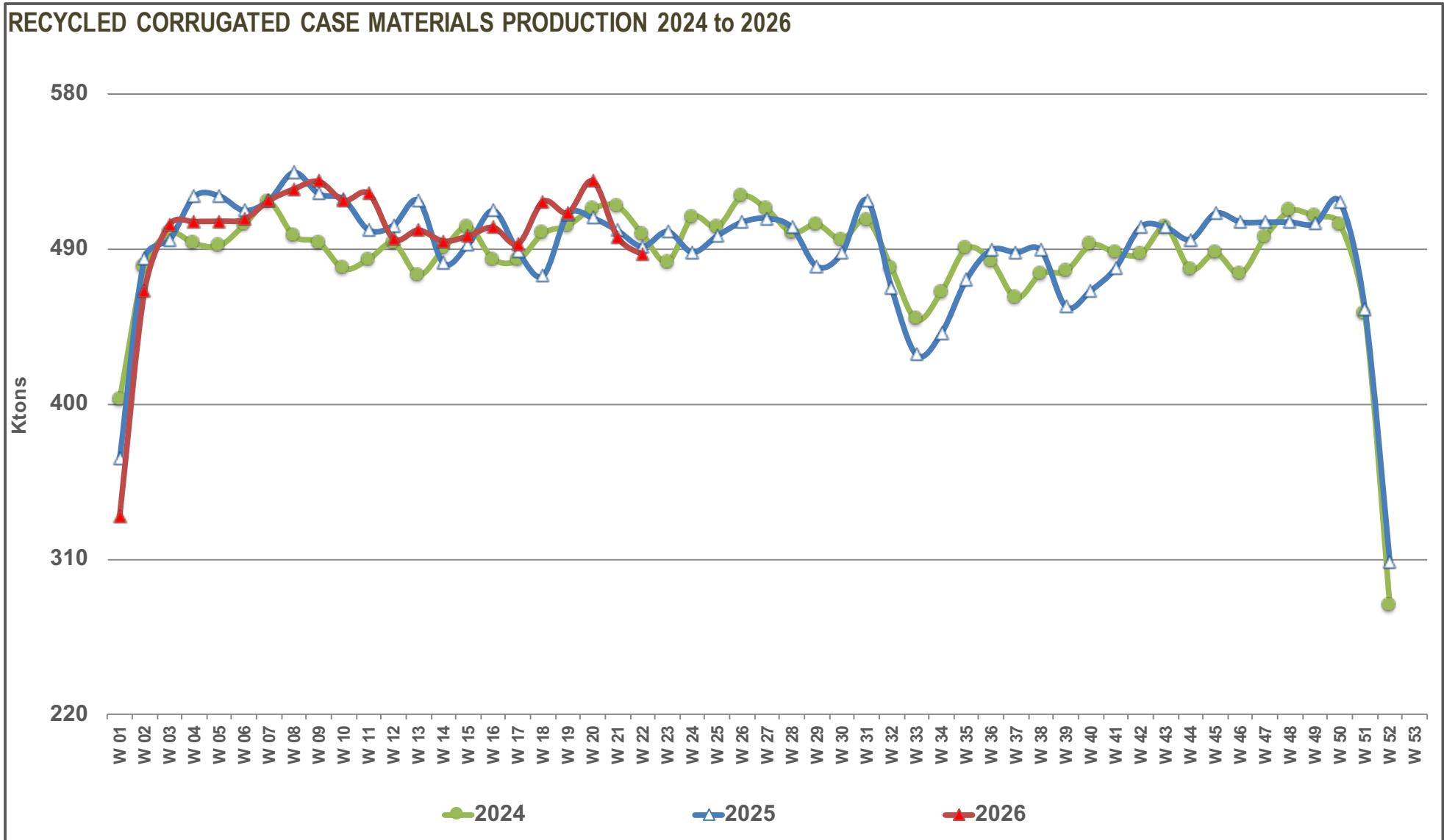

in tons & %	2026										YEAR TO DATE	
	14	15	16	17	18	19	20	21	22	(Since week 01)		
WEEKLY PRODUCTION* (92,6%)	494 626	497 637	502 556	493 089	517 587	511 134	529 482	496 787	486 887	CUMULATED PRODUCTION	10 963 537	
Δ PRODUCTION / Previous Week	tons	-6 380	+3 011	+4 919	-9 467	+24 498	-6 453	+18 348	-32 695	-9 900	Δ CUM. PROD. / CUM. PROD. Previous year	-14 620
	%	-1,3%	+0,6%	+1,0%	-1,9%	+5,0%	-1,2%	+3,6%	-6,2%	-2,0%		-0,1%
Same Week Previous Year	tons	481 821	492 842	512 291	488 474	474 480	510 018	507 943	500 628	491 454	CUMULATED PROD. PREVIOUS YEAR	10 978 157
	%	+2,7%	+1,0%	-1,9%	+0,9%	+9,1%	+0,2%	+4,2%	-0,8%	-0,9%		
of which												
FRANCE (95,4%)	65 187	64 439	67 662	60 376	65 454	68 381	69 374	61 471	57 519		1 436 178	
<i>Production Same Week Previous Year</i>	62 011	54 879	66 408	63 132	61 558	61 996	64 500	62 792	64 064		1 366 698 +5,1%	
GERMANY (99,8%)	196 666	194 891	184 601	179 737	190 626	192 353	198 557	189 951	187 089		4 175 839	
<i>Production Same Week Previous Year</i>	163 613	175 856	195 458	188 817	189 396	197 722	185 698	188 182	196 473		4 124 787 +1,2%	
SPAIN , PORTUGAL (95,4%)	66 374	69 510	67 270	74 333	72 028	70 325	67 000	61 451	66 994	CUMULATED PRODUCTION	1 526 189	
<i>Production Same Week Previous Year</i>	70 750	72 657	78 141	79 056	60 799	68 956	75 572	62 857	68 037		1 564 115 -2,4%	
NL, BE, UK (84,6%)	45 961	50 741	46 681	49 884	50 773	48 444	48 497	47 071	41 870	(Current and previous year in tons - Δ in %)	1 000 373	
<i>Production Same Week Previous Year</i>	46 637	48 471	48 044	47 517	48 369	45 508	37 986	46 264	41 114		1 019 493 -1,9%	
ITALY , AUSTRIA (94,0%)	70 344	72 420	86 006	72 484	82 146	78 072	88 830	80 822	75 486		1 665 302	
<i>Production Same Week Previous Year</i>	78 862	81 833	64 889	59 965	56 283	77 042	81 581	78 454	69 799		1 619 849 +2,8%	
BG, CZ, HR, HU, LT, PL, RO, SK (82,1%)	50 094	45 636	50 336	56 275	56 560	53 559	57 224	56 021	57 929		1 159 656	
<i>Production Same Week Previous Year</i>	59 948	59 146	59 351	49 987	58 075	58 794	62 606	62 079	51 967		1 283 215 -9,6%	

* cumulated production on Monday 6 o'clock a.m.

(%) : representativity of the sample based on the total European 2024 production or on the country (or group of countries) 2024 production.

HISTORICAL SAMPLE

• Graph 6 •





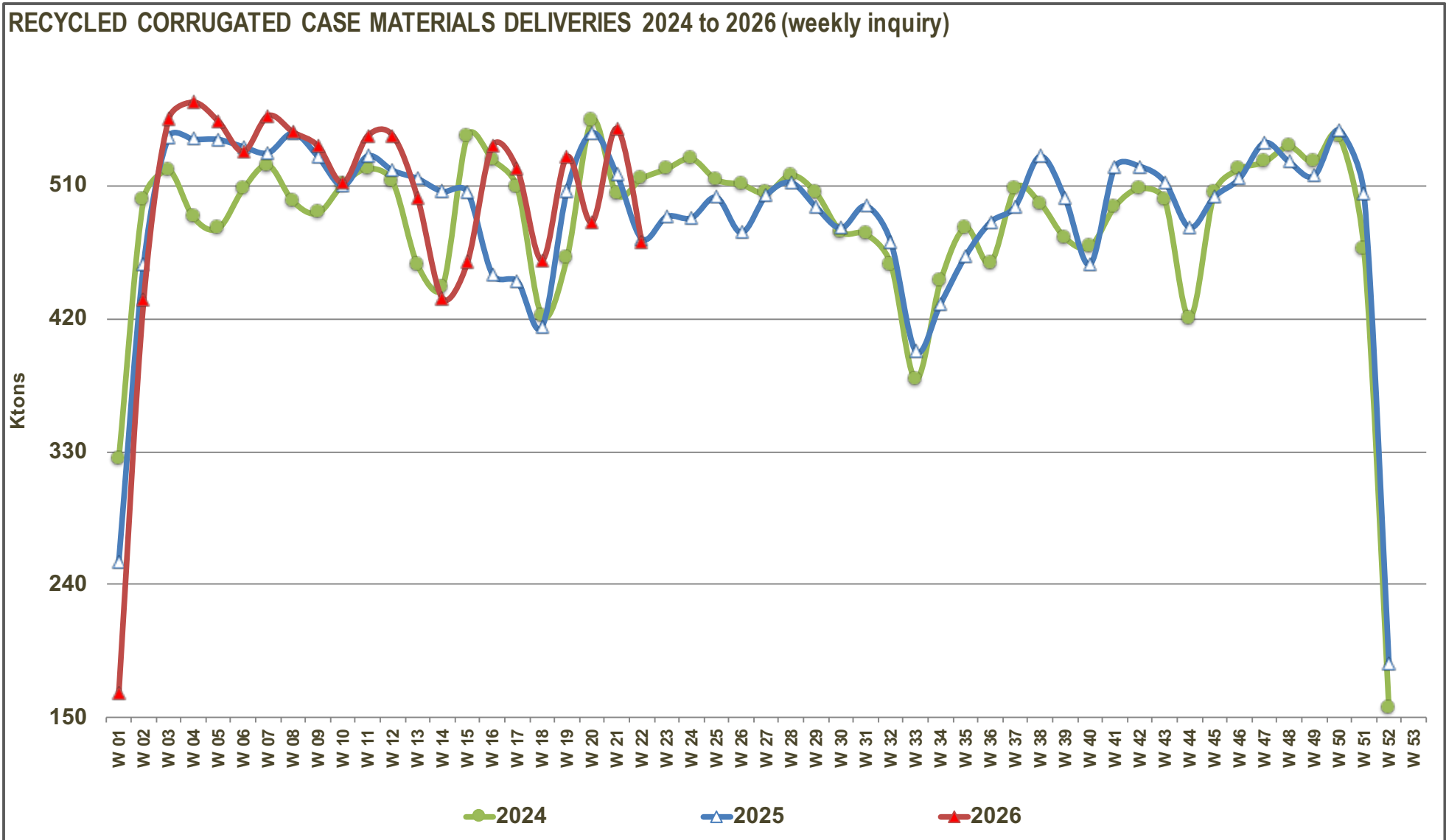
in tons & %	2026										YEAR TO DATE	
	14	15	16	17	18	19	20	21	22	(Since week 01)		
WEEKLY DELIVERIES (92,6%)	433 834	458 228	537 017	521 640	459 843	529 811	485 463	549 022	472 139	CUMULATED DELIVERIES	10 998 088	
Δ DELIVERIES/Previous Week	tons	-68 141	+24 394	+78 789	-15 377	-61 797	+69 968	-44 348	+63 559	-76 883	Δ CUM. DEL. / CUM. DEL.Previous year	71 713
	%	-13,6%	+5,6%	+17,2%	-2,9%	-11,8%	+15,2%	-8,4%	+13,1%	-14,0%		+0,7%
Same Week Previous Year	tons	506 192	505 917	450 261	445 550	414 692	506 940	545 946	517 853	474 304	<i>CUMULATED DEL. PREVIOUS YEAR</i>	10 926 375
	%	-14,3%	-9,4%	+19,3%	+17,1%	+10,9%	+4,5%	-11,1%	+6,0%	-0,5%		
of which												
FRANCE (95,4%)	61 812	57 760	72 310	66 187	54 970	61 327	60 778	75 977	57 441		1 436 266	
<i>Deliveries Same Week Previous Year</i>	61 854	59 876	72 531	49 191	53 652	55 704	69 115	66 494	57 725		1 367 386 +5,0%	
GERMANY (99,8%)	174 403	172 500	200 198	197 401	175 608	208 176	167 811	210 251	174 594		4 198 609	
<i>Deliveries Same Week Previous Year</i>	189 054	182 529	164 829	170 762	159 896	200 058	209 082	199 490	171 846		4 106 449 +2,2%	
SPAIN , PORTUGAL (95,4%)	45 205	72 534	76 623	75 242	66 196	73 110	75 596	71 354	65 552	CUMULATED DELIVERIES	1 537 477	
<i>Deliveries Same Week Previous Year</i>	73 493	74 598	54 064	75 044	56 402	79 730	73 846	65 074	69 849		1 572 191 -2,2%	
NL, BE, UK (84,6%)	39 827	41 349	49 568	49 337	44 745	49 850	45 394	51 029	43 270	(Current and previous year in tons - Δ in %)	1 006 920	
<i>Deliveries Same Week Previous Year</i>	49 243	46 034	41 304	41 023	45 562	41 512	49 430	47 451	39 017		991 545 +1,6%	
ITALY , AUSTRIA (94,0%)	64 506	63 747	85 937	82 995	66 155	81 509	81 908	86 213	73 689		1 648 564	
<i>Deliveries Same Week Previous Year</i>	71 778	79 725	69 677	53 129	55 936	70 316	81 035	80 125	73 194		1 597 089 +3,2%	
BG, CZ, HR, HU, LT, PL, RO, SK (82,1%)	48 081	50 338	52 381	50 478	52 169	55 839	53 976	54 198	57 593		1 170 252	
<i>Deliveries Same Week Previous Year</i>	60 770	63 155	47 856	56 401	43 244	59 620	63 438	59 219	62 673		1 291 715 -9,4%	

* weekly deliveries = weekly production ± Δ stocks

(%) : representativity of the sample based on the total European 2024 production or on the country (or group of countries) 2024 production.

HISTORICAL SAMPLE

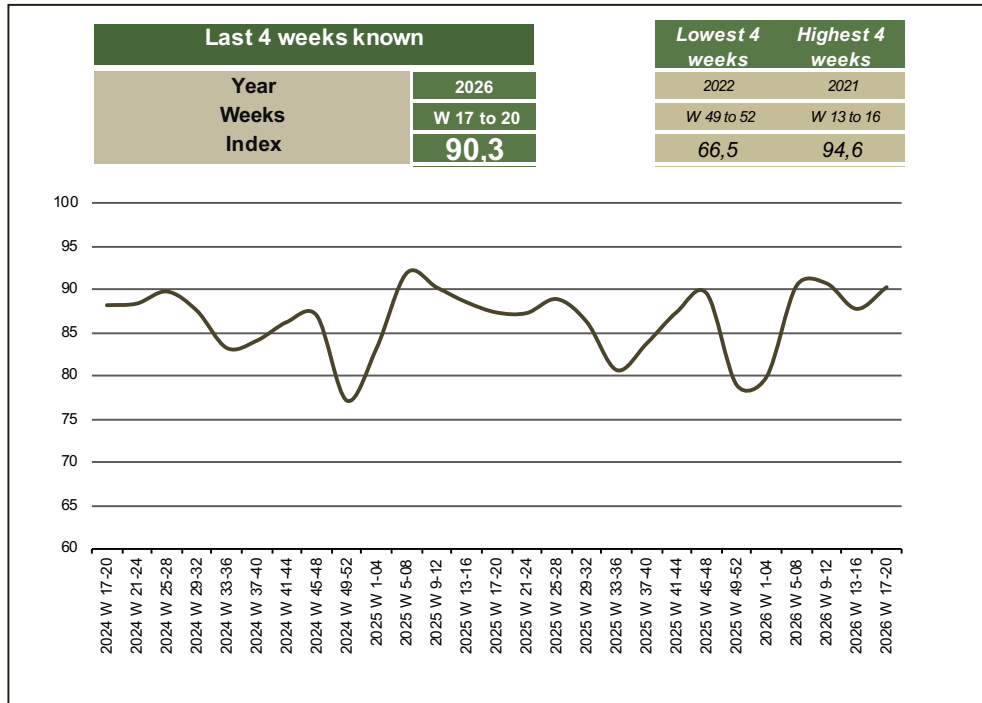
• Graph 7 •



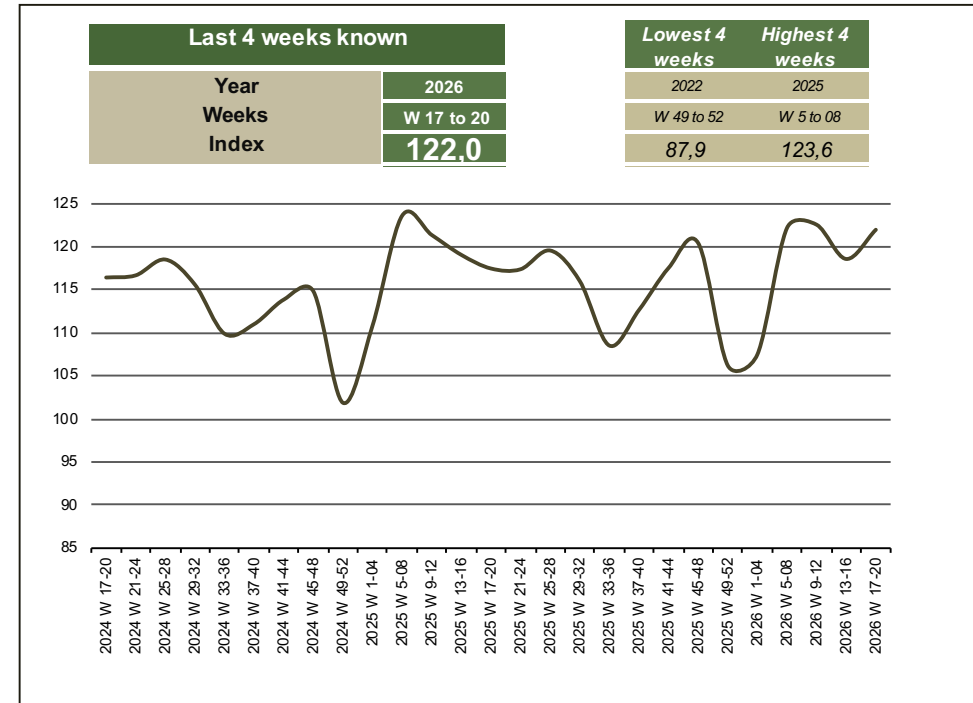
HISTORICAL SAMPLE

EUROPEAN SAMPLE • Year 2026 • weeks 17 to 20

updated every 4 weeks

 **UTILISATION RATE * (in %)**


* From the 1st January 2019 the series have been changed, consequently comparisons and calculation are only valid as of January 2019.

 **PRODUCTION LEVEL (in index **)**


** Basis 100 : production during the weeks 01 to 04 of 2019

NOTE 1 : The capacity is calculated per calendar year as follow :

- The production of the first four weeks of the considered calendar year
- This theoretical result is taken into account with 98% (considering maintenance stops, break or any other technical problems), to get a "real" capacity in tons / year.
- The capacity can be amended during the year if big changes occurred such as closure of plant, new capacities, long stoppages ...

NOTE 2 : The utilisation rate index is calculated as follow :

- $[(\text{Production during the last 4 weeks}) / (\text{cumulated capacities during 4 weeks})] \times 100.$

ENLARGED SAMPLE
RE: recovered papers stocks intended for the production of recycled corrugated case materials


in tons & %	2026												
	10	11	12	13	14	15	16	17	18	19	20	21	22
RP STOCKS* (94,5%)	823 514	819 855	847 219	872 321	804 498	726 370	780 619	832 969	767 437	770 859	729 390	780 171	779 180
Days of production	10,7	10,7	11,1	11,4	10,5	9,5	10,2	11,0	10,1	10,3	9,5	10,2	10,2
Δ STOCKS / Previous Week	tons -25 167	-3 659	+27 364	+25 102	-67 823	-78 128	+54 249	+52 350	-65 532	+3 422	-41 469	+50 781	- 991
	% -3,0%	-0,4%	+3,3%	+3,0%	-7,8%	-9,7%	+7,5%	+6,7%	-7,9%	+0,4%	-5,4%	+7,0%	-0,1%
Same Week Previous Year	tons 675 871	676 317	683 698	692 790	696 110	748 128	713 041	710 543	677 051	709 281	777 794	862 681	869 204
	% +21,8%	+21,2%	+23,9%	+25,9%	+15,6%	-2,9%	+9,5%	+17,2%	+13,3%	+8,7%	-6,2%	-9,6%	-10,4%
of which													
FRANCE (95,4%)	100 499	98 079	96 915	107 466	108 527	92 990	105 205	117 452	117 947	101 103	84 598	95 655	109 702
Days of production	9,8	9,5	9,4	10,4	10,5	9,1	10,2	11,4	11,5	10,1	8,6	9,7	11,1
Stocks Same Week Previous Year	82 813	79 050	78 503	74 169	71 600	82 331	80 150	79 938	76 691	70 935	80 576	94 722	96 522
GERMANY (99,8%)	274 059	275 789	296 011	306 482	279 054	238 487	264 548	294 913	266 113	277 261	248 351	271 977	251 804
Days of production	9,4	9,5	10,2	10,5	9,6	8,2	9,1	10,4	9,5	9,9	8,8	9,6	9,0
Stocks Same Week Previous Year	240 073	243 535	244 399	252 838	279 947	297 650	262 693	253 301	232 220	246 163	280 085	311 195	300 948
SPAIN , PORTUGAL (95,4%)	113 385	113 440	110 253	108 086	84 596	78 678	87 589	87 672	81 462	90 410	98 345	103 998	108 787
Days of production	10,5	10,5	10,2	10,0	7,8	7,3	8,2	8,2	7,7	8,5	9,4	9,9	10,4
Stocks Same Week Previous Year	86 220	85 524	77 610	85 586	83 926	93 946	78 478	74 259	73 551	94 999	100 334	111 157	117 922
NL, BE, UK (84,6%)	39 835	39 956	53 884	53 088	49 747	44 145	44 579	45 986	38 463	43 226	42 472	49 962	49 313
Days of production	5,6	5,7	7,6	7,5	7,0	6,2	6,2	6,4	5,3	6,0	5,9	6,9	6,8
Stocks Same Week Previous Year	41 906	40 787	47 117	42 278	35 636	40 013	42 597	35 482	37 155	39 326	46 773	49 222	50 323
ITALY , AUSTRIA (94,0%)	170 779	169 372	169 133	171 705	166 531	152 517	156 446	164 229	154 929	147 530	140 233	146 373	148 735
Days of production	14,8	14,7	14,3	14,6	14,2	13,0	12,9	13,5	12,7	12,1	11,2	11,7	11,9
Stocks Same Week Previous Year	130 653	133 191	139 147	142 602	136 710	142 712	161 842	165 050	171 793	165 307	167 942	186 527	195 560
BG, CZ, GR, HR, HU, LT, PL, RO, SK, SR (90,6%)	124 957	123 219	121 023	125 494	116 043	119 553	122 252	122 717	108 523	111 329	115 391	112 206	110 839
Days of production	13,4	13,0	12,8	13,2	12,3	12,6	12,9	12,8	11,2	11,5	11,8	11,5	11,3
Stocks Same Week Previous Year	94 206	94 230	96 922	95 317	88 291	91 476	87 281	102 513	85 641	92 551	102 084	109 858	107 929

* stock level on Monday 6 o'clock a.m.

(%) : representativity of the sample based on the total European 2024 production or on the country (or group of countries) 2024 production.

ENLARGED SAMPLE

in tons & %	2026												
	10	11	12	13	14	15	16	17	18	19	20	21	22
RCCM STOCKS* (94,5%)	900 754	878 017	831 442	830 637	891 854	930 470	895 711	863 945	925 101	904 498	949 645	898 628	914 181
Days of supply	11,0	10,7	10,3	10,3	11,1	11,7	11,3	10,9	11,7	11,5	12,2	11,4	11,6
Δ STOCKS / Previous Week	tons +5 743	-22 737	-46 575	-805	+61 217	+38 616	-34 759	-31 766	+61 156	-20 603	+45 147	-51 017	+15 553
	% +0,6%	-2,5%	-5,3%	-0,1%	+7,4%	+4,3%	-3,7%	-3,5%	+7,1%	-2,2%	+5,0%	-5,4%	+1,7%
Same Week Previous Year	tons 981 000	951 108	933 620	937 090	914 653	901 510	963 432	1004 383	1065 241	1067 095	1029 143	1011 816	1029 035
	% -8,2%	-7,7%	-10,9%	-11,4%	-2,5%	+3,2%	-7,0%	-14,0%	-13,2%	-15,2%	-7,7%	-11,2%	-11,2%
of which													
FRANCE (95,4%)	127 012	123 345	125 412	119 127	122 502	129 181	124 533	118 722	129 206	136 260	144 856	130 350	130 428
Days of supply	11,9	11,5	11,7	11,1	11,5	12,1	11,8	11,3	12,3	13,4	14,5	12,3	12,3
Stocks Same Week Previous Year	102 219	103 108	100 979	102 171	102 328	97 331	91 208	105 149	113 055	119 347	114 732	111 030	117 369
GERMANY (99,8%)	327 349	319 423	295 504	299 309	321 572	343 963	328 366	310 702	325 720	309 897	340 643	320 343	332 838
Days of supply	10,5	10,2	9,5	9,8	10,6	11,6	11,1	10,8	11,3	10,6	11,7	10,7	11,1
Stocks Same Week Previous Year	385 497	372 237	371 020	374 634	349 193	342 520	373 149	391 204	420 704	418 368	394 984	383 676	408 303
SPAIN , PORTUGAL (95,4%)	150 837	147 915	134 063	142 662	163 831	160 807	151 454	150 545	156 377	153 592	144 996	135 093	136 535
Days of supply	13,4	13,2	11,1	12,2	14,0	13,7	12,8	12,8	13,3	13,0	13,3	12,4	12,6
Stocks Same Week Previous Year	154 250	146 230	148 323	142 971	140 228	138 287	162 364	166 376	170 773	159 999	161 725	159 508	157 696
NL, BE, UK (84,6%)	86 378	86 652	75 122	75 875	82 009	91 401	88 514	89 061	95 089	93 683	96 786	92 828	91 428
Days of supply	12,3	12,3	10,7	10,8	11,7	13,0	12,6	12,6	13,5	13,2	13,6	12,9	12,7
Stocks Same Week Previous Year	98 837	98 549	89 659	95 190	92 584	95 021	101 761	108 255	111 062	115 058	103 614	102 427	104 524
ITALY , AUSTRIA (94,0%)	104 013	100 763	100 509	96 151	101 989	110 662	110 731	100 220	116 211	112 774	119 696	114 305	116 102
Days of supply	8,6	8,3	8,3	7,9	8,4	9,1	9,1	8,2	9,5	9,3	9,9	9,3	9,4
Stocks Same Week Previous Year	117 725	115 402	111 623	108 757	115 841	117 949	113 161	119 997	120 344	127 070	127 616	125 945	122 550
BG, CZ, GR, HR, HU, LT, PL, RO, SK, SR (90,6%)	105 165	99 919	100 832	97 513	99 951	94 456	92 113	94 695	102 498	98 292	102 668	105 709	106 850
Days of supply	10,2	9,6	9,7	9,4	9,9	9,4	9,3	9,5	10,3	10,2	10,7	11,1	11,0
Stocks Same Week Previous Year	122 472	115 582	112 016	113 367	114 479	110 402	121 789	113 402	129 303	127 253	126 472	129 230	118 593

* stock level on Monday 6 o'clock a.m.

(%) : representativity of the sample based on the total European 2024 production or on the country (or group of countries) 2024 production.



in tons & %	2026										YEAR TO DATE	
	14	15	16	17	18	19	20	21	22	(Since week 01)		
WEEKLY PRODUCTION* (94,5%)	505 921	505 962	513 068	504 068	528 859	521 649	540 754	508 680	497 258	CUMULATED PRODUCTION	11 189 098	
Δ PRODUCTION / Previous Week	tons	-6 117	+ 41	+7 106	-9 000	+24 791	-7 210	+19 105	-32 074	-11 422	Δ CUM. PROD. / CUM. PROD. Previous year	2 619
	%	-1,2%	+0,0%	+1,4%	-1,8%	+4,9%	-1,4%	+3,7%	-5,9%	-2,2%		+0,0%
Same Week Previous Year	tons	492 710	502 637	521 488	496 940	484 534	519 959	516 518	510 112	500 798	CUMULATED PROD. PREVIOUS YEAR	11 186 479
	%	+2,7%	+0,7%	-1,6%	+1,4%	+9,1%	+0,3%	+4,7%	-0,3%	-0,7%		
of which												
FRANCE (95,4%)	65 187	64 439	67 662	60 376	65 454	68 381	69 374	61 471	57 519	CUMULATED PRODUCTION	1 436 178	
<i>Production Same Week Previous Year</i>	62 011	54 879	66 408	63 132	61 558	61 996	64 500	62 792	64 064		1 366 698	+5,1%
GERMANY (99,8%)	196 666	194 891	184 601	179 737	190 626	192 353	198 557	189 951	187 089	CUMULATED PRODUCTION	4 175 839	
<i>Production Same Week Previous Year</i>	163 613	175 856	195 458	188 817	189 396	197 722	185 698	188 182	196 473		4 124 787	+1,2%
SPAIN , PORTUGAL (95,4%)	66 374	69 510	67 270	74 333	72 028	70 325	67 000	61 451	66 994	CUMULATED PRODUCTION	1 526 189	
<i>Production Same Week Previous Year</i>	70 750	72 657	78 141	79 056	60 799	68 956	75 572	62 857	68 037		1 564 115	-2,4%
NL, BE, UK (84,6%)	45 961	50 741	46 681	49 884	50 773	48 444	48 497	47 071	41 870	CUMULATED PRODUCTION	1 000 373	
<i>Production Same Week Previous Year</i>	46 637	48 471	48 044	47 517	48 369	45 508	37 986	46 264	41 114		1 019 493	-1,9%
ITALY , AUSTRIA (94,0%)	70 344	72 420	86 006	72 484	82 146	78 072	88 830	80 822	75 486	CUMULATED PRODUCTION	1 665 302	
<i>Production Same Week Previous Year</i>	78 862	81 833	64 889	59 965	56 283	77 042	81 581	78 454	69 799		1 619 849	+2,8%
BG, CZ, GR, HR, HU, LT, PL, RO, SK, SR (90,6%)	61 389	53 961	60 848	67 254	67 832	64 074	68 496	67 914	68 300	CUMULATED PRODUCTION	1 385 217	
<i>Production Same Week Previous Year</i>	70 837	68 941	68 548	58 453	68 129	68 735	71 181	71 563	61 311		1 491 537	-7,1%

* cumulated production on Monday 6 o'clock a.m.

(%) : representativity of the sample based on the total European 2024 production or on the country (or group of countries) 2024 production.

ENLARGED SAMPLE


in tons & %	2026										YEAR TO DATE	
	14	15	16	17	18	19	20	21	22	(Since week 01)		
WEEKLY DELIVERIES (94,5%)	444 704	467 346	547 827	535 834	467 703	542 252	495 607	559 697	481 705	CUMULATED DELIVERIES	11 223 131	
Δ DELIVERIES/Previous Week	tons	-68 139	+22 642	+80 481	-11 993	-68 131	+74 549	-46 645	+64 090	-77 992	Δ CUM. DEL. / CUM. DEL.Previous year	88 845
	%	-13,3%	+5,1%	+17,2%	-2,2%	-12,7%	+15,9%	-8,6%	+12,9%	-13,9%		+0,8%
Same Week Previous Year	tons	515 147	515 780	459 566	455 989	423 676	518 105	554 470	527 439	483 579	<i>CUMULATED DEL. PREVIOUS YEAR</i>	11 134 286
	%	-13,7%	-9,4%	+19,2%	+17,5%	+10,4%	+4,7%	-10,6%	+6,1%	-0,4%		
of which												
FRANCE (95,4%)	61 812	57 760	72 310	66 187	54 970	61 327	60 778	75 977	57 441		1 436 266	
<i>Deliveries Same Week Previous Year</i>	61 854	59 876	72 531	49 191	53 652	55 704	69 115	66 494	57 725		1 367 386 +5,0%	
GERMANY (99,8%)	174 403	172 500	200 198	197 401	175 608	208 176	167 811	210 251	174 594		4 198 609	
<i>Deliveries Same Week Previous Year</i>	189 054	182 529	164 829	170 762	159 896	200 058	209 082	199 490	171 846		4 106 449 +2,2%	
SPAIN , PORTUGAL (95,4%)	45 205	72 534	76 623	75 242	66 196	73 110	75 596	71 354	65 552	CUMULATED DELIVERIES	1 537 477	
<i>Deliveries Same Week Previous Year</i>	73 493	74 598	54 064	75 044	56 402	79 730	73 846	65 074	69 849		1 572 191 -2,2%	
NL, BE, UK (84,6%)	39 827	41 349	49 568	49 337	44 745	49 850	45 394	51 029	43 270	(Current and previous year in tons - Δ in %)	1 006 920	
<i>Deliveries Same Week Previous Year</i>	49 243	46 034	41 304	41 023	45 562	41 512	49 430	47 451	39 017		991 545 +1,6%	
ITALY , AUSTRIA (94,0%)	64 506	63 747	85 937	82 995	66 155	81 509	81 908	86 213	73 689		1 648 564	
<i>Deliveries Same Week Previous Year</i>	71 778	79 725	69 677	53 129	55 936	70 316	81 035	80 125	73 194		1 597 089 +3,2%	
BG, CZ, GR, HR, HU, LT, PL, RO, SK, SR (90,6%)	58 951	59 456	63 191	64 672	60 029	68 280	64 120	64 873	67 159		1 395 295	
<i>Deliveries Same Week Previous Year</i>	69 725	73 018	57 161	66 840	52 228	70 785	71 962	68 805	71 948		1 499 626 -7,0%	

* weekly deliveries = weekly production ± Δ stocks

(%) : representativity of the sample based on the total European 2024 production or on the country (or group of countries) 2024 production.