

- ▶ **RECOVERED PAPERS STOCKS**
- ▶ **RCCM STOCKS**
- ▶ **RCCM PRODUCTION**
- ▶ **RCCM DELIVERIES (deducted)**

The statistics issued by Containerboard Europe are proprietary to the Association. They are sent to member associations or individual members in accordance with the rules laid down in the internal regulations and must not be distributed outside the members in question unless explicitly approved by the CCB Advisory Board

RE: recovered papers stocks intended for the production of recycled corrugated case materials



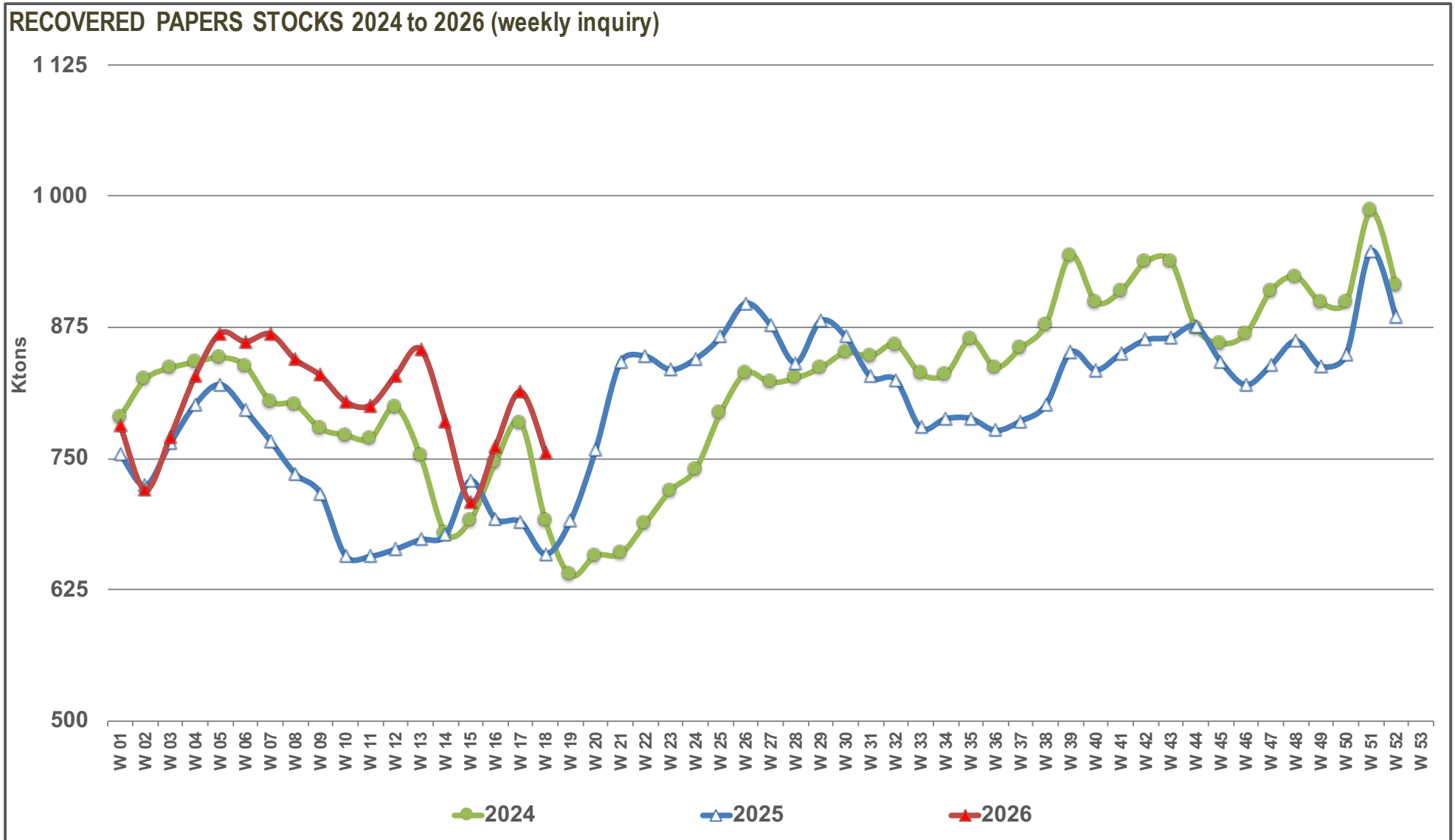
in tons & %	2026												
	06	07	08	09	10	11	12	13	14	15	16	17	18
RP STOCKS* (92,6%)	861 455	868 695	844 495	829 235	804 322	800 873	829 067	854 422	785 928	708 141	761 685	813 902	755 942
Days of production	11,9	11,9	11,3	11,0	10,7	10,6	11,0	11,3	10,4	9,4	10,1	11,0	10,2
Δ STOCKS / Previous Week	tons -8 096	+7 240	-24 200	-15 260	-24 913	-3 449	+28 194	+25 355	-68 494	-77 787	+53 544	+52 217	-57 960
	% -0,9%	+0,8%	-2,8%	-1,8%	-3,0%	-0,4%	+3,5%	+3,1%	-8,0%	-9,9%	+7,6%	+6,9%	-7,1%
Same Week Previous Year	tons 795 897	767 008	735 486	717 025	657 747	656 961	663 743	672 770	677 006	728 964	692 646	689 730	659 023
	% +8,2%	+13,3%	+14,8%	+15,6%	+22,3%	+21,9%	+24,9%	+27,0%	+16,1%	-2,9%	+10,0%	+18,0%	+14,7%
of which													
FRANCE (95,4%)	110 096	104 330	102 717	100 214	100 499	98 079	96 915	107 466	108 527	92 990	105 205	117 452	117 947
Days of production	11,5	10,4	10,0	9,7	9,8	9,5	9,4	10,4	10,5	9,1	10,2	11,4	11,5
Stocks Same Week Previous Year	96 648	93 478	92 432	91 246	82 813	79 050	78 503	74 169	71 600	82 331	80 150	79 938	76 691
GERMANY (99,8%)	298 076	309 813	301 726	293 588	274 059	275 789	296 011	306 482	277 364	236 297	262 158	292 223	263 223
Days of production	10,8	11,1	10,8	10,2	9,4	9,5	10,2	10,5	9,5	8,1	9,0	10,3	9,4
Stocks Same Week Previous Year	290 480	286 021	265 990	254 299	240 073	243 535	244 399	252 838	279 947	297 650	262 693	253 301	232 220
SPAIN , PORTUGAL (95,4%)	111 748	112 631	116 018	116 596	113 385	113 440	110 253	108 086	84 596	78 678	87 589	87 672	81 462
Days of production	10,7	10,7	10,7	10,8	10,5	10,5	10,2	10,0	7,8	7,3	8,2	8,2	7,7
Stocks Same Week Previous Year	119 667	114 896	109 066	103 871	86 220	85 524	77 610	85 586	83 926	93 946	78 478	74 259	73 551
NL, BE, UK (84,6%)	46 545	50 390	42 341	38 034	39 835	39 956	53 884	53 088	49 747	44 145	44 579	45 986	38 463
Days of production	6,8	7,5	6,1	5,4	5,6	5,7	7,6	7,5	7,0	6,2	6,2	6,4	5,3
Stocks Same Week Previous Year	41 986	44 195	39 374	39 846	41 906	40 787	47 117	42 278	35 636	40 013	42 597	35 482	37 155
ITALY , AUSTRIA (94,0%)	181 810	176 027	169 872	174 512	170 779	169 372	169 133	171 705	166 531	152 517	156 446	164 229	160 234
Days of production	15,8	15,3	14,8	15,2	14,8	14,7	14,3	14,6	14,2	13,0	12,9	13,5	13,2
Stocks Same Week Previous Year	159 399	150 550	148 986	153 440	130 653	133 191	139 147	142 602	136 710	142 712	161 842	165 050	171 793
BG, CZ, HR, HU, LT, PL, RO, SK (82,1%)	113 180	115 504	111 821	106 291	105 765	104 237	102 871	107 595	99 163	103 514	105 708	106 340	94 613
Days of production	14,6	14,8	14,3	13,5	13,5	13,1	12,9	13,5	12,5	13,0	13,3	13,3	11,7
Stocks Same Week Previous Year	87 717	77 868	79 638	74 323	76 082	74 874	76 967	75 297	69 187	72 312	66 886	81 700	67 613

* stock level on Monday 6 o'clock a.m.

(%) : representativity of the sample based on the total European 2024 production or on the country (or group of countries) 2024 production.

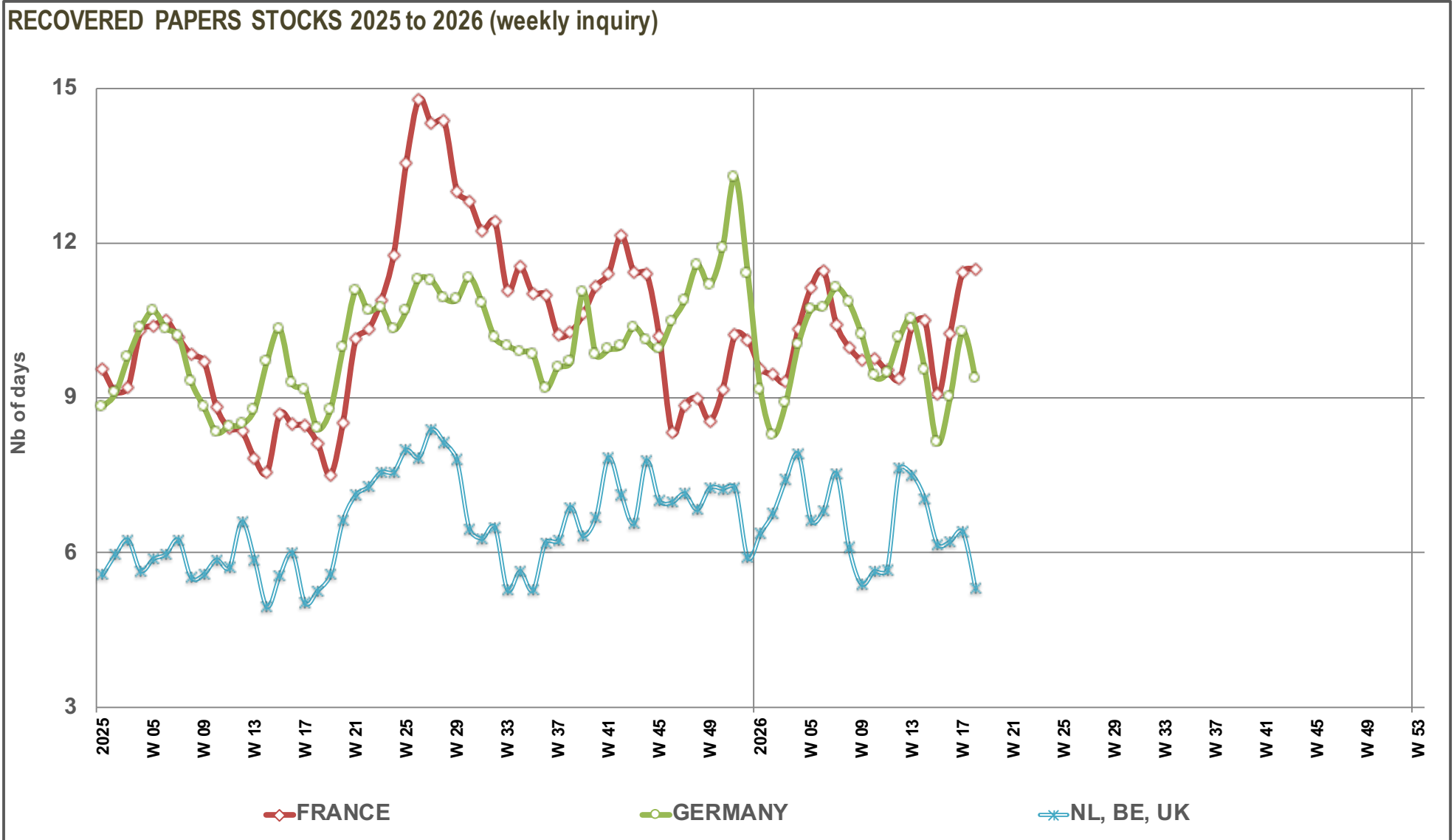
HISTORICAL SAMPLE

• Graph 1 •



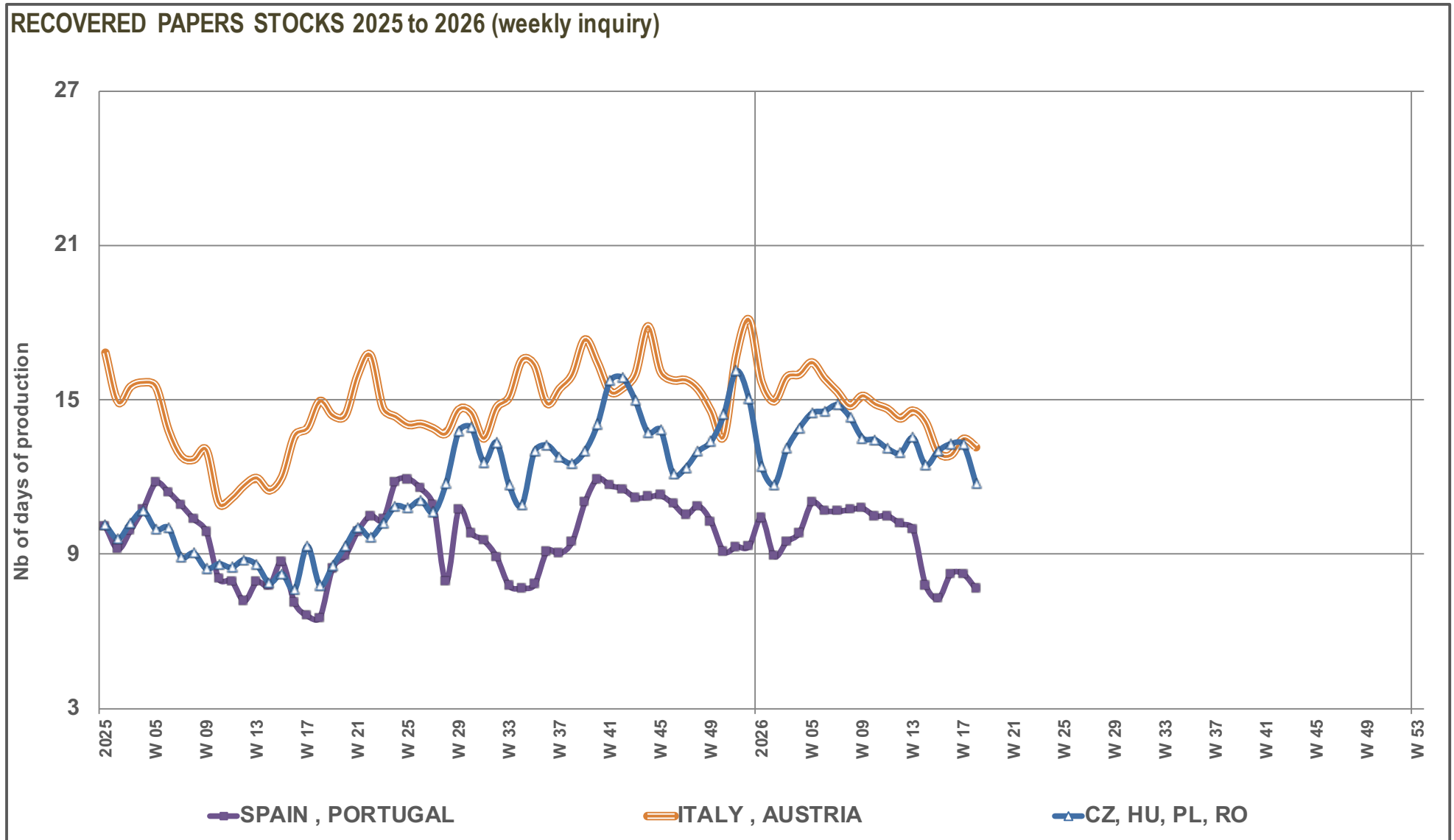
HISTORICAL SAMPLE

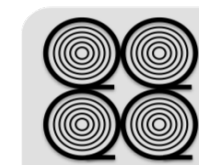
• Graph 2 •



HISTORICAL SAMPLE

• Graph 3 •



HISTORICAL SAMPLE


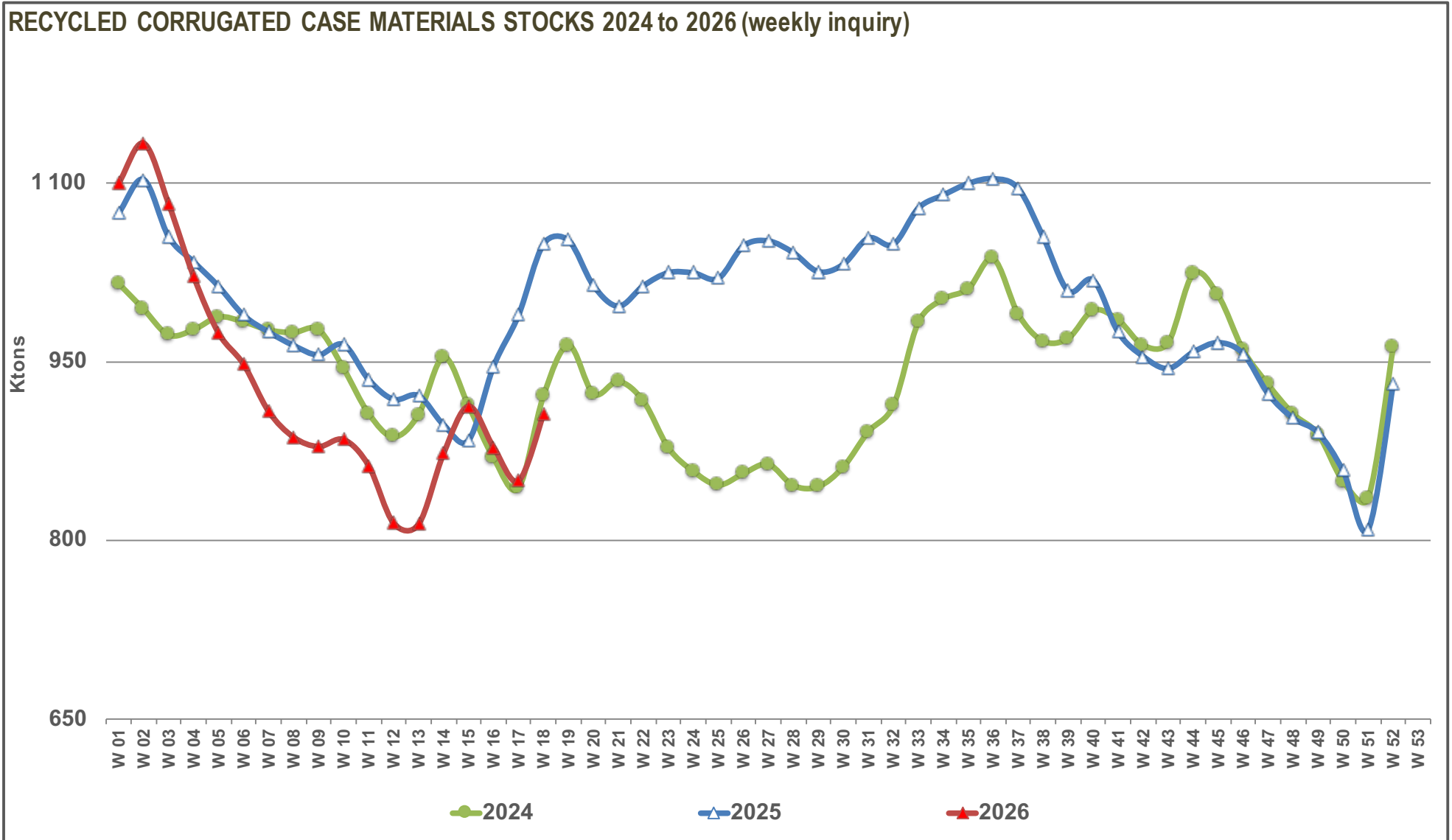
in tons & %	2026												
	06	07	08	09	10	11	12	13	14	15	16	17	18
RCCM STOCKS* (92,6%)	947 756	908 304	886 641	878 712	884 577	862 793	814 479	813 510	872 820	912 488	878 286	849 994	905 971
Days of supply	11,8	11,3	11,0	10,9	11,0	10,7	10,3	10,3	11,1	11,7	11,3	10,9	11,7
Δ STOCKS / Previous Week	tons -26 140	-39 452	-21 663	-7 929	+5 865	-21 784	-48 314	-969	+59 310	+39 668	-34 202	-28 292	+55 977
	% -2,7%	-4,2%	-2,4%	-0,9%	+0,7%	-2,5%	-5,6%	-0,1%	+7,3%	+4,5%	-3,7%	-3,2%	+6,6%
Same Week Previous Year	tons 988 933	974 915	963 609	955 673	964 349	935 037	918 321	921 428	897 057	883 982	946 012	988 936	1048 724
	% -4,2%	-6,8%	-8,0%	-8,1%	-8,3%	-7,7%	-11,3%	-11,7%	-2,7%	+3,2%	-7,2%	-14,0%	-13,6%
of which													
FRANCE (95,4%)	133 731	131 939	128 896	129 844	127 012	123 345	125 412	119 127	122 502	129 181	124 533	118 722	129 206
Days of supply	12,8	12,4	12,1	12,2	11,9	11,5	11,7	11,1	11,5	12,1	11,8	11,3	12,3
Stocks Same Week Previous Year	108 943	104 269	102 298	101 502	102 219	103 108	100 979	102 171	102 328	97 331	91 208	105 149	113 055
GERMANY (99,8%)	358 210	336 429	326 420	323 815	327 349	319 423	295 504	299 309	320 090	342 740	327 402	309 997	325 274
Days of supply	11,5	10,8	10,4	10,4	10,5	10,2	9,5	9,8	10,5	11,6	11,1	10,7	11,3
Stocks Same Week Previous Year	401 386	384 693	386 959	386 265	385 497	372 237	371 020	374 634	349 193	342 520	373 149	391 204	420 704
SPAIN , PORTUGAL (95,4%)	150 657	149 830	151 041	149 769	150 837	147 915	134 063	142 662	163 831	160 807	151 454	150 545	156 377
Days of supply	13,4	13,3	13,5	13,3	13,4	13,2	11,1	12,2	14,0	13,7	12,8	12,8	13,3
Stocks Same Week Previous Year	157 371	153 918	154 572	149 007	154 250	146 230	148 323	142 971	140 228	138 287	162 364	166 376	170 773
NL, BE, UK (84,6%)	92 509	88 505	89 187	89 736	86 378	86 652	75 122	75 875	82 009	91 401	88 514	89 061	95 089
Days of supply	13,2	12,6	12,7	12,8	12,3	12,3	10,7	10,8	11,7	13,0	12,6	12,6	13,5
Stocks Same Week Previous Year	94 093	96 534	102 897	105 154	98 837	98 549	89 659	95 190	92 584	95 021	101 761	108 255	111 062
ITALY , AUSTRIA (94,0%)	116 193	109 084	103 506	96 935	104 013	100 763	100 509	96 151	101 989	110 662	110 731	100 220	114 185
Days of supply	9,6	9,0	8,5	8,0	8,6	8,3	8,3	7,9	8,4	9,1	9,1	8,2	9,4
Stocks Same Week Previous Year	114 953	115 407	111 681	108 143	117 725	115 402	111 623	108 757	115 841	117 949	113 161	119 997	120 344
BG, CZ, HR, HU, LT, PL, RO, SK (82,1%)	96 456	92 517	87 591	88 613	88 988	84 695	83 869	80 386	82 399	77 697	75 652	81 449	85 840
Days of supply	11,2	10,7	10,1	10,3	10,3	9,8	9,7	9,3	9,7	9,2	9,1	9,8	10,4
Stocks Same Week Previous Year	112 187	120 094	105 202	105 602	105 821	99 511	96 717	97 705	96 883	92 874	104 369	97 955	112 786

* stock level on Monday 6 o'clock a.m.

(%) : representativity of the sample based on the total European 2024 production or on the country (or group of countries) 2024 production.

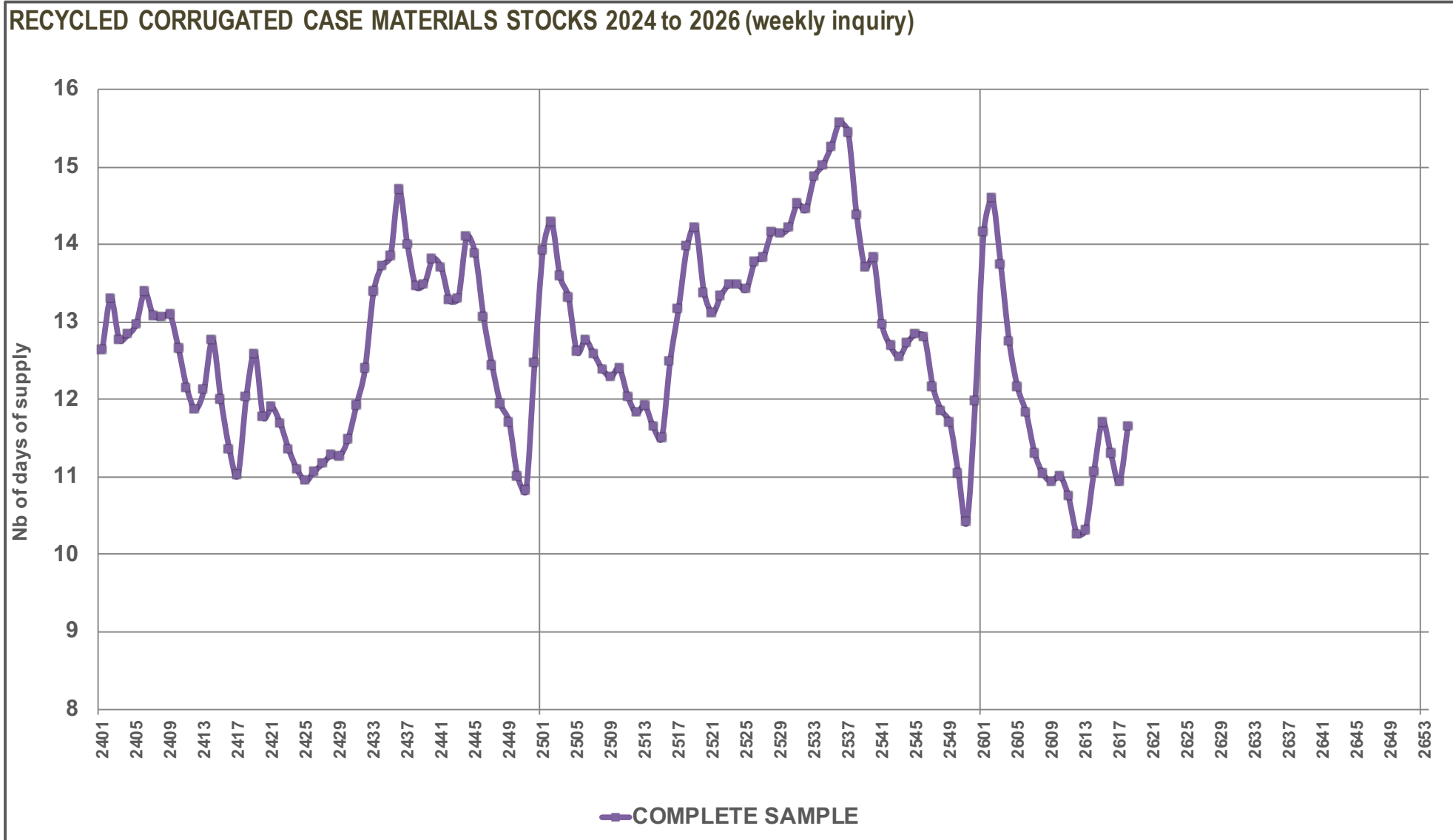
HISTORICAL SAMPLE

• Graph 4 •



HISTORICAL SAMPLE

• Graph 5 •



HISTORICAL SAMPLE

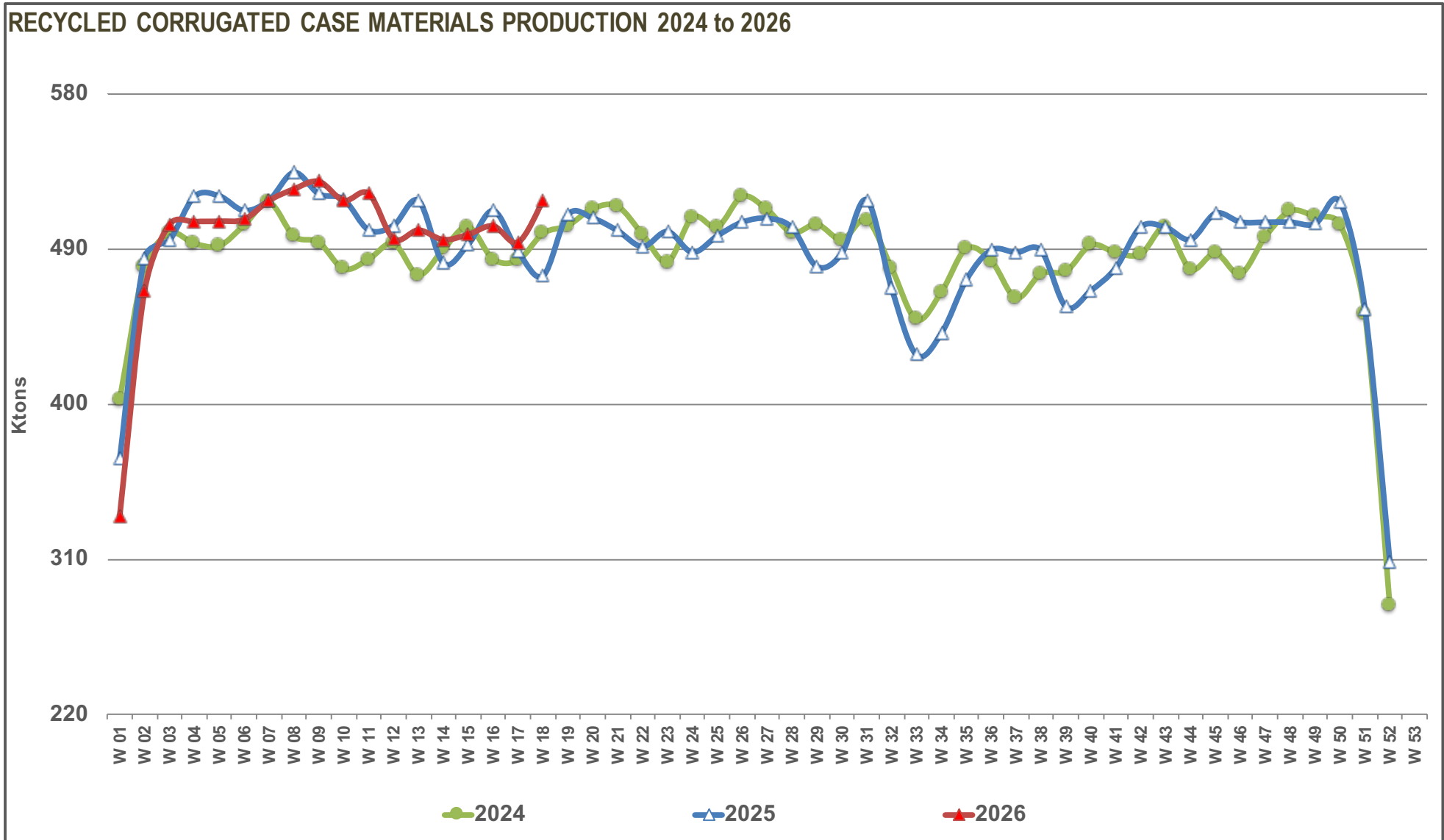

in tons & %	2026										YEAR TO DATE	
	10	11	12	13	14	15	16	17	18	(Since week 01)		
WEEKLY PRODUCTION* (92,6%)	518 192	522 268	495 978	501 006	495 481	498 492	503 411	493 944	518 165	CUMULATED PRODUCTION	8 943 245	
Δ PRODUCTION / Previous Week	tons	-11 048	+4 076	-26 290	+5 028	-5 525	+3 011	+4 919	-9 467	+24 221	Δ CUM. PROD. / CUM. PROD. Previous year	-24 869
	%	-2,1%	+0,8%	-5,0%	+1,0%	-1,1%	+0,6%	+1,0%	-1,9%	+4,9%		-0,3%
Same Week Previous Year	tons	518 844	501 065	503 780	518 073	481 821	492 842	512 291	488 474	474 480	CUMULATED PROD. PREVIOUS YEAR	8 968 114
	%	-0,1%	+4,2%	-1,5%	-3,3%	+2,8%	+1,1%	-1,7%	+1,1%	+9,2%		
of which												
FRANCE (95,4%)	66 785	71 543	72 154	61 081	65 187	64 439	67 662	60 376	65 454		1 179 433	
<i>Production Same Week Previous Year</i>	62 993	63 360	64 783	65 862	62 011	54 879	66 408	63 132	61 558		1 113 346 +5,9%	
GERMANY (99,8%)	200 526	195 202	174 948	193 908	197 521	195 746	185 456	180 592	191 481		3 412 164	
<i>Production Same Week Previous Year</i>	191 618	182 161	191 623	188 269	163 613	175 856	195 458	188 817	189 396		3 356 712 +1,7%	
SPAIN , PORTUGAL (95,4%)	72 595	70 466	74 701	69 832	66 374	69 510	67 270	74 333	72 028	CUMULATED PRODUCTION	1 260 419	
<i>Production Same Week Previous Year</i>	76 414	70 976	74 690	74 034	70 750	72 657	78 141	79 056	60 799		1 288 693 -2,2%	
NL, BE, UK (84,6%)	45 794	48 756	35 056	48 425	45 961	50 741	46 681	49 884	50 773	(Current and previous year in tons - Δ in %)	814 491	
<i>Production Same Week Previous Year</i>	42 044	47 691	37 889	50 385	46 637	48 471	48 044	47 517	48 369		848 621 -4,0%	
ITALY , AUSTRIA (94,0%)	78 744	80 327	84 355	75 689	70 344	72 420	86 006	72 484	81 869		1 341 815	
<i>Production Same Week Previous Year</i>	84 453	77 480	76 552	78 142	78 862	81 833	64 889	59 965	56 283		1 312 973 +2,2%	
BG, CZ, HR, HU, LT, PL, RO, SK (82,1%)	53 748	55 974	54 764	52 071	50 094	45 636	50 336	56 275	56 560		934 923	
<i>Production Same Week Previous Year</i>	61 322	59 397	58 243	61 381	59 948	59 146	59 351	49 987	58 075		1 047 769 -10,8%	

* cumulated production on Monday 6 o'clock a.m.

(%) : representativity of the sample based on the total European 2024 production or on the country (or group of countries) 2024 production.

HISTORICAL SAMPLE

• Graph 6 •





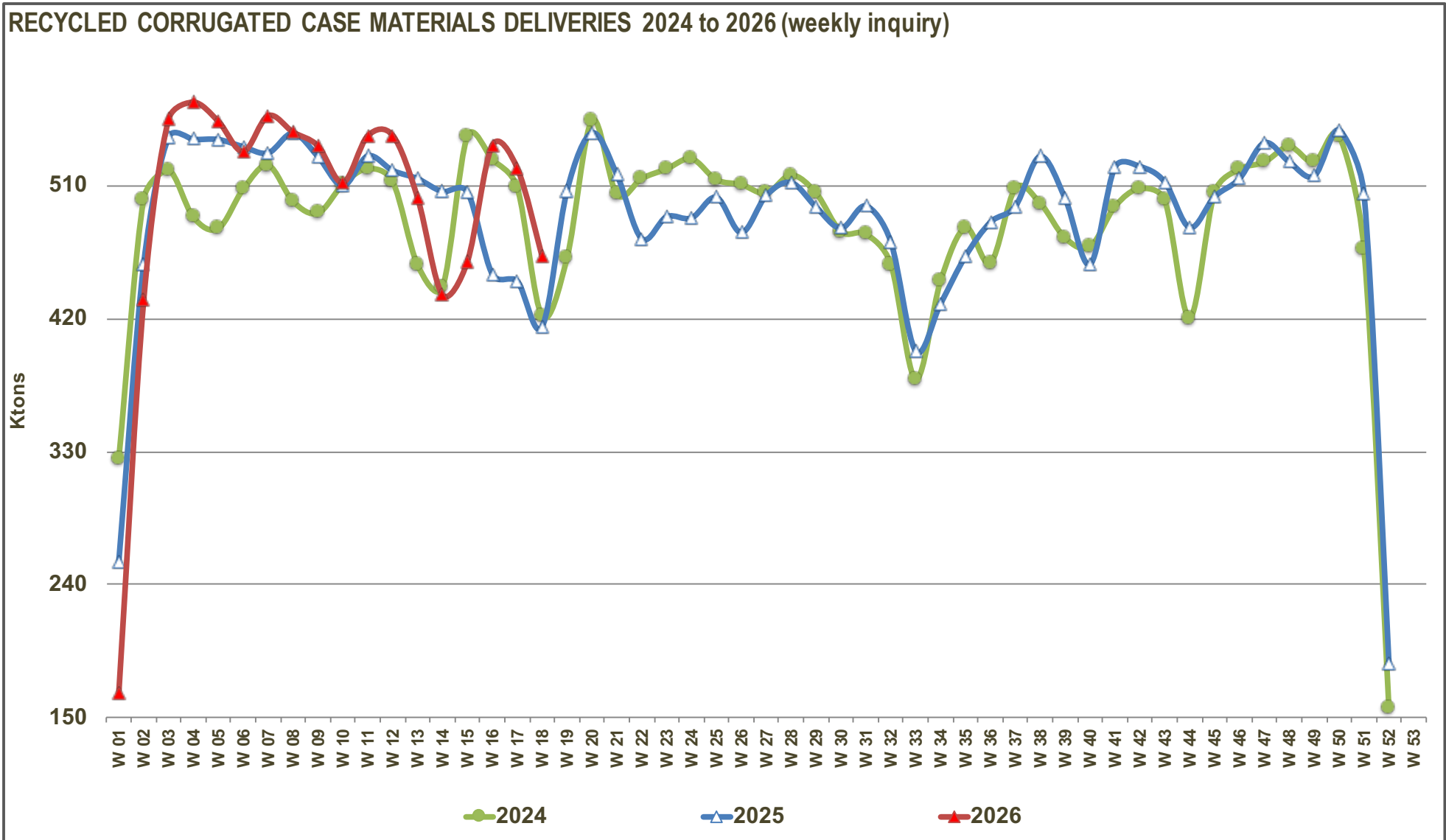
in tons & %	2026										YEAR TO DATE	
	10	11	12	13	14	15	16	17	18	(Since week 01)		
WEEKLY DELIVERIES (92,6%)	512 327	544 052	544 292	501 975	436 171	458 824	537 613	522 236	462 188	CUMULATED DELIVERIES	8 968 123	
Δ DELIVERIES/Previous Week	tons	-24 842	+31 725	+ 240	-42 317	-65 804	+22 653	+78 789	-15 377	-60 048	Δ CUM. DEL. / CUM. DEL.Previous year	86 791
	%	-4,6%	+6,2%	+0,0%	-7,8%	-13,1%	+5,2%	+17,2%	-2,9%	-11,5%		+1,0%
Same Week Previous Year	tons	510 168	530 377	520 496	514 966	506 192	505 917	450 261	445 550	414 692	<i>CUMULATED DEL. PREVIOUS YEAR</i>	8 881 332
	%	+0,4%	+2,6%	+4,6%	-2,5%	-13,8%	-9,3%	+19,4%	+17,2%	+11,5%		
of which												
FRANCE (95,4%)	69 617	75 210	70 087	67 366	61 812	57 760	72 310	66 187	54 970		1 180 743	
<i>Deliveries Same Week Previous Year</i>	62 276	62 471	66 912	64 670	61 854	59 876	72 531	49 191	53 652		1 118 348 +5,6%	
GERMANY (99,8%)	196 992	203 128	198 867	190 103	176 740	173 096	200 794	197 997	176 204		3 442 498	
<i>Deliveries Same Week Previous Year</i>	192 386	195 421	192 840	184 655	189 054	182 529	164 829	170 762	159 896		3 325 973 +3,5%	
SPAIN , PORTUGAL (95,4%)	71 527	73 388	88 553	61 233	45 205	72 534	76 623	75 242	66 196	CUMULATED DELIVERIES	1 251 865	
<i>Deliveries Same Week Previous Year</i>	71 171	78 996	72 597	79 386	73 493	74 598	54 064	75 044	56 402		1 283 692 -2,5%	
NL, BE, UK (84,6%)	49 152	48 482	46 586	47 672	39 827	41 349	49 568	49 337	44 745	(Current and previous year in tons - Δ in %)	817 377	
<i>Deliveries Same Week Previous Year</i>	48 361	47 979	46 779	44 854	49 243	46 034	41 304	41 023	45 562		814 135 +0,4%	
ITALY , AUSTRIA (94,0%)	71 666	83 577	84 609	80 047	64 506	63 747	85 937	82 995	67 904		1 326 994	
<i>Deliveries Same Week Previous Year</i>	74 871	79 803	80 331	81 008	71 778	79 725	69 677	53 129	55 936		1 292 419 +2,7%	
BG, CZ, HR, HU, LT, PL, RO, SK (82,1%)	53 373	60 267	55 590	55 554	48 081	50 338	52 381	50 478	52 169		948 646	
<i>Deliveries Same Week Previous Year</i>	61 103	65 707	61 037	60 393	60 770	63 155	47 856	56 401	43 244		1 046 765 -9,4%	

* weekly deliveries = weekly production ± Δ stocks

(%) : representativity of the sample based on the total European 2024 production or on the country (or group of countries) 2024 production.

HISTORICAL SAMPLE

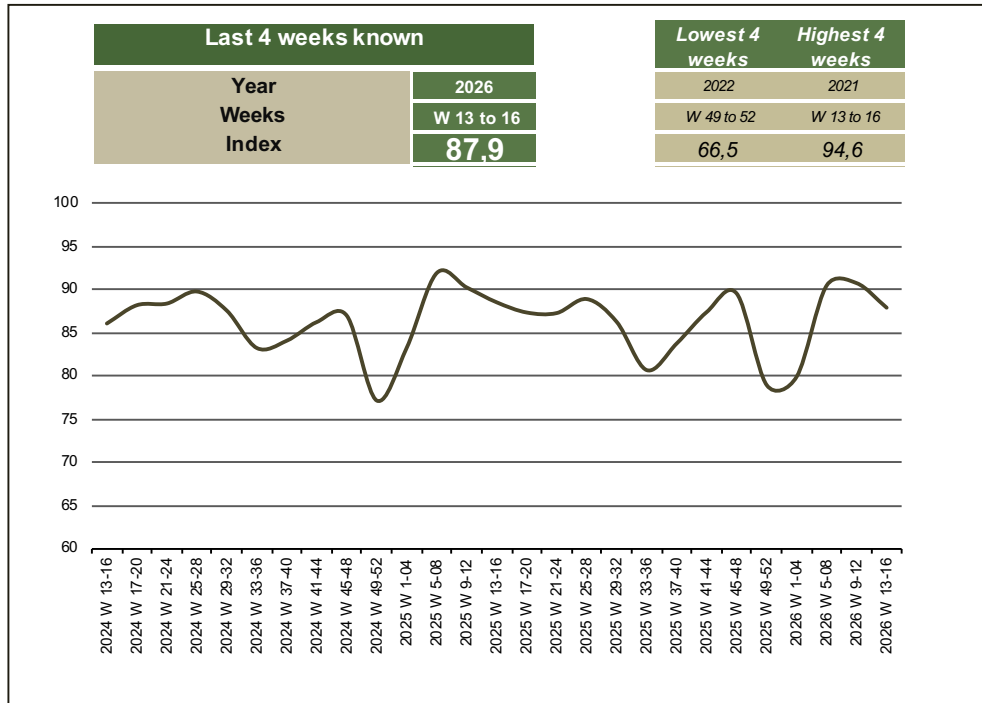
• Graph 7 •



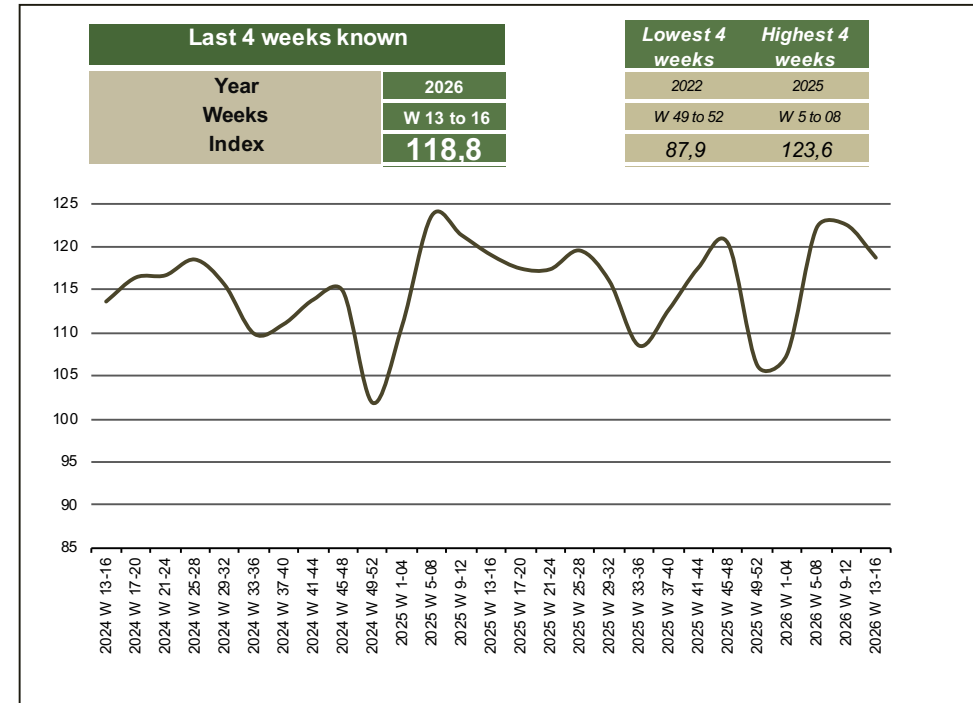
HISTORICAL SAMPLE

EUROPEAN SAMPLE • Year 2026 • weeks 13 to 16

updated every 4 weeks

 **UTILISATION RATE * (in %)**


* From the 1st January 2019 the series have been changed, consequently comparisons and calculation are only valid as of January 2019.

 **PRODUCTION LEVEL (in index **)**


** Basis 100 : production during the weeks 01 to 04 of 2019

NOTE 1 : The capacity is calculated per calendar year as follow :

- The production of the first four weeks of the considered calendar year
- This theoretical result is taken into account with 98% (considering maintenance stops, break or any other technical problems), to get a "real" capacity in tons / year.
- The capacity can be amended during the year if big changes occurred such as closure of plant, new capacities, long stoppages ...

NOTE 2 : The utilisation rate index is calculated as follow :

- $[(\text{Production during the last 4 weeks}) / (\text{cumulated capacities during 4 weeks})] \times 100.$

ENLARGED SAMPLE
RE: recovered papers stocks intended for the production of recycled corrugated case materials


in tons & %	2026												
	06	07	08	09	10	11	12	13	14	15	16	17	18
RP STOCKS* (94,5%)	878 071	884 510	860 304	848 681	823 514	819 855	847 219	872 321	802 808	724 180	778 229	830 279	769 852
Days of production	11,9	11,8	11,3	11,1	10,7	10,7	11,1	11,4	10,5	9,5	10,2	11,0	10,1
Δ STOCKS / Previous Week	tons -9 176	+6 439	-24 206	-11 623	-25 167	-3 659	+27 364	+25 102	-69 513	-78 628	+54 049	+52 050	-60 427
	% -1,0%	+0,7%	-2,7%	-1,4%	-3,0%	-0,4%	+3,3%	+3,0%	-8,0%	-9,8%	+7,5%	+6,7%	-7,3%
<i>Same Week Previous Year</i>	<i>tons 821 979</i>	<i>792 740</i>	<i>760 468</i>	<i>737 254</i>	<i>675 871</i>	<i>676 317</i>	<i>683 698</i>	<i>692 790</i>	<i>696 110</i>	<i>748 128</i>	<i>713 041</i>	<i>710 543</i>	<i>677 051</i>
	<i>% +6,8%</i>	<i>+11,6%</i>	<i>+13,1%</i>	<i>+15,1%</i>	<i>+21,8%</i>	<i>+21,2%</i>	<i>+23,9%</i>	<i>+25,9%</i>	<i>+15,3%</i>	<i>-3,2%</i>	<i>+9,1%</i>	<i>+16,9%</i>	<i>+13,7%</i>
of which													
FRANCE (95,4%)	110 096	104 330	102 717	100 214	100 499	98 079	96 915	107 466	108 527	92 990	105 205	117 452	117 947
Days of production	11,5	10,4	10,0	9,7	9,8	9,5	9,4	10,4	10,5	9,1	10,2	11,4	11,5
<i>Stocks Same Week Previous Year</i>	<i>96 648</i>	<i>93 478</i>	<i>92 432</i>	<i>91 246</i>	<i>82 813</i>	<i>79 050</i>	<i>78 503</i>	<i>74 169</i>	<i>71 600</i>	<i>82 331</i>	<i>80 150</i>	<i>79 938</i>	<i>76 691</i>
GERMANY (99,8%)	298 076	309 813	301 726	293 588	274 059	275 789	296 011	306 482	277 364	236 297	262 158	292 223	263 223
Days of production	10,8	11,1	10,8	10,2	9,4	9,5	10,2	10,5	9,5	8,1	9,0	10,3	9,4
<i>Stocks Same Week Previous Year</i>	<i>290 480</i>	<i>286 021</i>	<i>265 990</i>	<i>254 299</i>	<i>240 073</i>	<i>243 535</i>	<i>244 399</i>	<i>252 838</i>	<i>279 947</i>	<i>297 650</i>	<i>262 693</i>	<i>253 301</i>	<i>232 220</i>
SPAIN , PORTUGAL (95,4%)	111 748	112 631	116 018	116 596	113 385	113 440	110 253	108 086	84 596	78 678	87 589	87 672	81 462
Days of production	10,7	10,7	10,7	10,8	10,5	10,5	10,2	10,0	7,8	7,3	8,2	8,2	7,7
<i>Stocks Same Week Previous Year</i>	<i>119 667</i>	<i>114 896</i>	<i>109 066</i>	<i>103 871</i>	<i>86 220</i>	<i>85 524</i>	<i>77 610</i>	<i>85 586</i>	<i>83 926</i>	<i>93 946</i>	<i>78 478</i>	<i>74 259</i>	<i>73 551</i>
NL, BE, UK (84,6%)	46 545	50 390	42 341	38 034	39 835	39 956	53 884	53 088	49 747	44 145	44 579	45 986	38 463
Days of production	6,8	7,5	6,1	5,4	5,6	5,7	7,6	7,5	7,0	6,2	6,2	6,4	5,3
<i>Stocks Same Week Previous Year</i>	<i>41 986</i>	<i>44 195</i>	<i>39 374</i>	<i>39 846</i>	<i>41 906</i>	<i>40 787</i>	<i>47 117</i>	<i>42 278</i>	<i>35 636</i>	<i>40 013</i>	<i>42 597</i>	<i>35 482</i>	<i>37 155</i>
ITALY , AUSTRIA (94,0%)	181 810	176 027	169 872	174 512	170 779	169 372	169 133	171 705	166 531	152 517	156 446	164 229	160 234
Days of production	15,8	15,3	14,8	15,2	14,8	14,7	14,3	14,6	14,2	13,0	12,9	13,5	13,2
<i>Stocks Same Week Previous Year</i>	<i>159 399</i>	<i>150 550</i>	<i>148 986</i>	<i>153 440</i>	<i>130 653</i>	<i>133 191</i>	<i>139 147</i>	<i>142 602</i>	<i>136 710</i>	<i>142 712</i>	<i>161 842</i>	<i>165 050</i>	<i>171 793</i>
BG, CZ, GR, HR, HU, LT, PL, RO, SK, SR (90,6%)	129 796	131 319	127 630	125 737	124 957	123 219	121 023	125 494	116 043	119 553	122 252	122 717	108 523
Days of production	14,0	14,1	13,7	13,5	13,4	13,0	12,8	13,2	12,3	12,6	12,9	12,8	11,3
<i>Stocks Same Week Previous Year</i>	<i>113 799</i>	<i>103 600</i>	<i>104 620</i>	<i>94 552</i>	<i>94 206</i>	<i>94 230</i>	<i>96 922</i>	<i>95 317</i>	<i>88 291</i>	<i>91 476</i>	<i>87 281</i>	<i>102 513</i>	<i>85 641</i>

* stock level on Monday 6 o'clock a.m.

(%) : representativity of the sample based on the total European 2024 production or on the country (or group of countries) 2024 production.

ENLARGED SAMPLE

in tons & %	2026												
	06	07	08	09	10	11	12	13	14	15	16	17	18
RCCM STOCKS* (94,5%)	963 942	924 335	903 208	895 011	900 754	878 017	831 442	830 637	890 372	929 247	894 747	863 240	921 819
Days of supply	11,8	11,3	11,0	10,9	11,0	10,7	10,3	10,3	11,1	11,7	11,3	10,9	11,6
Δ STOCKS / Previous Week	tons -28 233	-39 607	-21 127	-8 197	+5 743	-22 737	-46 575	-805	+59 735	+38 875	-34 500	-31 507	+58 579
	% -2,8%	-4,1%	-2,3%	-0,9%	+0,6%	-2,5%	-5,3%	-0,1%	+7,2%	+4,4%	-3,7%	-3,5%	+6,8%
Same Week Previous Year	tons 1002 346	991 562	980 958	972 671	981 000	951 108	933 620	937 090	914 653	901 510	963 432	1004 383	1065 241
	% -3,8%	-6,8%	-7,9%	-8,0%	-8,2%	-7,7%	-10,9%	-11,4%	-2,7%	+3,1%	-7,1%	-14,1%	-13,5%
of which													
FRANCE (95,4%)	133 731	131 939	128 896	129 844	127 012	123 345	125 412	119 127	122 502	129 181	124 533	118 722	129 206
Days of supply	12,8	12,4	12,1	12,2	11,9	11,5	11,7	11,1	11,5	12,1	11,8	11,3	12,3
Stocks Same Week Previous Year	108 943	104 269	102 298	101 502	102 219	103 108	100 979	102 171	102 328	97 331	91 208	105 149	113 055
GERMANY (99,8%)	358 210	336 429	326 420	323 815	327 349	319 423	295 504	299 309	320 090	342 740	327 402	309 997	325 274
Days of supply	11,5	10,8	10,4	10,4	10,5	10,2	9,5	9,8	10,5	11,6	11,1	10,7	11,3
Stocks Same Week Previous Year	401 386	384 693	386 959	386 265	385 497	372 237	371 020	374 634	349 193	342 520	373 149	391 204	420 704
SPAIN , PORTUGAL (95,4%)	150 657	149 830	151 041	149 769	150 837	147 915	134 063	142 662	163 831	160 807	151 454	150 545	156 377
Days of supply	13,4	13,3	13,5	13,3	13,4	13,2	11,1	12,2	14,0	13,7	12,8	12,8	13,3
Stocks Same Week Previous Year	157 371	153 918	154 572	149 007	154 250	146 230	148 323	142 971	140 228	138 287	162 364	166 376	170 773
NL, BE, UK (84,6%)	92 509	88 505	89 187	89 736	86 378	86 652	75 122	75 875	82 009	91 401	88 514	89 061	95 089
Days of supply	13,2	12,6	12,7	12,8	12,3	12,3	10,7	10,8	11,7	13,0	12,6	12,6	13,5
Stocks Same Week Previous Year	94 093	96 534	102 897	105 154	98 837	98 549	89 659	95 190	92 584	95 021	101 761	108 255	111 062
ITALY , AUSTRIA (94,0%)	116 193	109 084	103 506	96 935	104 013	100 763	100 509	96 151	101 989	110 662	110 731	100 220	114 185
Days of supply	9,6	9,0	8,5	8,0	8,6	8,3	8,3	7,9	8,4	9,1	9,1	8,2	9,4
Stocks Same Week Previous Year	114 953	115 407	111 681	108 143	117 725	115 402	111 623	108 757	115 841	117 949	113 161	119 997	120 344
BG, CZ, GR, HR, HU, LT, PL, RO, SK, SR (90,6%)	112 642	108 548	104 158	104 912	105 165	99 919	100 832	97 513	99 951	94 456	92 113	94 695	101 688
Days of supply	10,9	10,5	10,1	10,2	10,2	9,6	9,7	9,4	9,9	9,4	9,3	9,5	10,3
Stocks Same Week Previous Year	125 600	136 741	122 551	122 600	122 472	115 582	112 016	113 367	114 479	110 402	121 789	113 402	129 303

* stock level on Monday 6 o'clock a.m.

(%) : representativity of the sample based on the total European 2024 production or on the country (or group of countries) 2024 production.



in tons & %	2026										YEAR TO DATE	
	10	11	12	13	14	15	16	17	18	(Since week 01)		
WEEKLY PRODUCTION* (94,5%)	527 791	533 494	506 392	512 038	506 776	506 817	513 923	504 923	528 797	CUMULATED PRODUCTION	9 124 115	
Δ PRODUCTION / Previous Week	tons	-9 896	+5 703	-27 102	+5 646	-5 262	+ 41	+7 106	-9 000	+23 874	Δ CUM. PROD. / CUM. PROD. Previous year	-14 977
	%	-1,8%	+1,1%	-5,1%	+1,1%	-1,0%	+0,0%	+1,4%	-1,8%	+4,7%		-0,2%
Same Week Previous Year	tons	528 781	509 809	513 171	528 268	492 710	502 637	521 488	496 940	484 534	CUMULATED PROD. PREVIOUS YEAR	9 139 092
	%	-0,2%	+4,6%	-1,3%	-3,1%	+2,9%	+0,8%	-1,5%	+1,6%	+9,1%		
of which												
FRANCE (95,4%)	66 785	71 543	72 154	61 081	65 187	64 439	67 662	60 376	65 454		1 179 433	
Production Same Week Previous Year	62 993	63 360	64 783	65 862	62 011	54 879	66 408	63 132	61 558		1 113 346 +5,9%	
GERMANY (99,8%)	200 526	195 202	174 948	193 908	197 521	195 746	185 456	180 592	191 481		3 412 164	
Production Same Week Previous Year	191 618	182 161	191 623	188 269	163 613	175 856	195 458	188 817	189 396		3 356 712 +1,7%	
SPAIN , PORTUGAL (95,4%)	72 595	70 466	74 701	69 832	66 374	69 510	67 270	74 333	72 028		1 260 419	
Production Same Week Previous Year	76 414	70 976	74 690	74 034	70 750	72 657	78 141	79 056	60 799	CUMULATED PRODUCTION	1 288 693 -2,2%	
NL, BE, UK (84,6%)	45 794	48 756	35 056	48 425	45 961	50 741	46 681	49 884	50 773	(Current and previous year in tons - Δ in %)	814 491	
Production Same Week Previous Year	42 044	47 691	37 889	50 385	46 637	48 471	48 044	47 517	48 369	848 621 -4,0%		
ITALY , AUSTRIA (94,0%)	78 744	80 327	84 355	75 689	70 344	72 420	86 006	72 484	81 869		1 341 815	
Production Same Week Previous Year	84 453	77 480	76 552	78 142	78 862	81 833	64 889	59 965	56 283	1 312 973 +2,2%		
BG, CZ, GR, HR, HU, LT, PL, RO, SK, SR (90,6%)	63 347	67 200	65 178	63 103	61 389	53 961	60 848	67 254	67 192		1 115 793	
Production Same Week Previous Year	71 259	68 141	67 634	71 576	70 837	68 941	68 548	58 453	68 129	1 218 747 -8,4%		

* cumulated production on Monday 6 o'clock a.m.

(%) : representativity of the sample based on the total European 2024 production or on the country (or group of countries) 2024 production.

ENLARGED SAMPLE


in tons & %	2026										YEAR TO DATE	
	10	11	12	13	14	15	16	17	18	(Since week 01)		
WEEKLY DELIVERIES (94,5%)	522 048	556 231	552 967	512 843	447 041	467 942	548 423	536 430	470 218	CUMULATED DELIVERIES	9 150 510	
Δ DELIVERIES/Previous Week	tons	-23 836	+34 183	-3 264	-40 124	-65 802	+20 901	+80 481	-11 993	-66 212	Δ CUM. DEL. / CUM. DEL.Previous year	99 817
	%	-4,4%	+6,5%	-0,6%	-7,3%	-12,8%	+4,7%	+17,2%	-2,2%	-12,3%		+1,1%
Same Week Previous Year	tons	520 452	539 701	530 659	524 798	515 147	515 780	459 566	455 989	423 676	<i>CUMULATED DEL. PREVIOUS YEAR</i>	9 050 693
	%	+0,3%	+3,1%	+4,2%	-2,3%	-13,2%	-9,3%	+19,3%	+17,6%	+11,0%		
of which												
FRANCE (95,4%)	69 617	75 210	70 087	67 366	61 812	57 760	72 310	66 187	54 970		1 180 743	
<i>Deliveries Same Week Previous Year</i>	62 276	62 471	66 912	64 670	61 854	59 876	72 531	49 191	53 652		1 118 348 +5,6%	
GERMANY (99,8%)	196 992	203 128	198 867	190 103	176 740	173 096	200 794	197 997	176 204		3 442 498	
<i>Deliveries Same Week Previous Year</i>	192 386	195 421	192 840	184 655	189 054	182 529	164 829	170 762	159 896		3 325 973 +3,5%	
SPAIN , PORTUGAL (95,4%)	71 527	73 388	88 553	61 233	45 205	72 534	76 623	75 242	66 196	CUMULATED DELIVERIES	1 251 865	
<i>Deliveries Same Week Previous Year</i>	71 171	78 996	72 597	79 386	73 493	74 598	54 064	75 044	56 402		1 283 692 -2,5%	
NL, BE, UK (84,6%)	49 152	48 482	46 586	47 672	39 827	41 349	49 568	49 337	44 745	(Current and previous year in tons - Δ in %)	817 377	
<i>Deliveries Same Week Previous Year</i>	48 361	47 979	46 779	44 854	49 243	46 034	41 304	41 023	45 562		814 135 +0,4%	
ITALY , AUSTRIA (94,0%)	71 666	83 577	84 609	80 047	64 506	63 747	85 937	82 995	67 904		1 326 994	
<i>Deliveries Same Week Previous Year</i>	74 871	79 803	80 331	81 008	71 778	79 725	69 677	53 129	55 936		1 292 419 +2,7%	
BG, CZ, GR, HR, HU, LT, PL, RO, SK, SR (90,6%)	63 094	72 446	64 265	66 422	58 951	59 456	63 191	64 672	60 199		1 131 033	
<i>Deliveries Same Week Previous Year</i>	71 387	75 031	71 200	70 225	69 725	73 018	57 161	66 840	52 228		1 216 126 -7,0%	

* weekly deliveries = weekly production ± Δ stocks

(%) : representativity of the sample based on the total European 2024 production or on the country (or group of countries) 2024 production.